

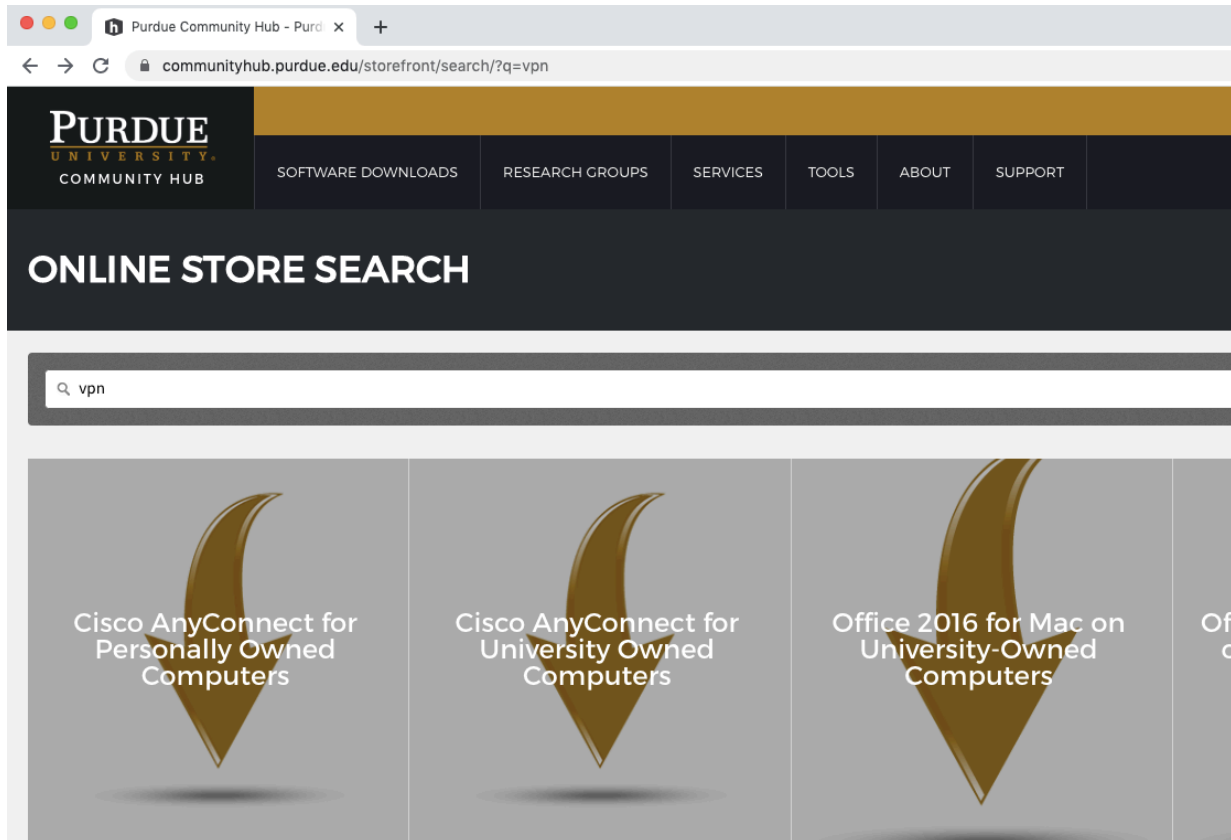
## Connect to the VPA Industrial Design drive from off-campus for Windows PC

### Install the Cisco VPN (Virtual Private Network)

Please visit

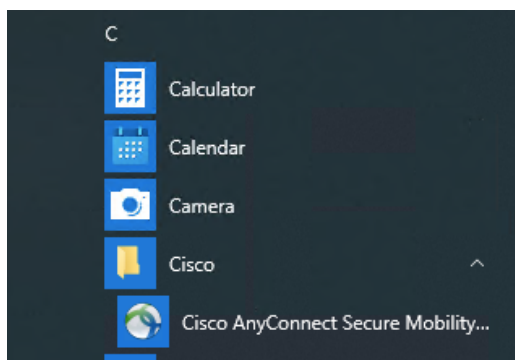
<https://communityhub.purdue.edu/storefront/overview>

Once you are logged onto the site using your username and boiler key for password you will then be able to do a search for vpn as seen below.

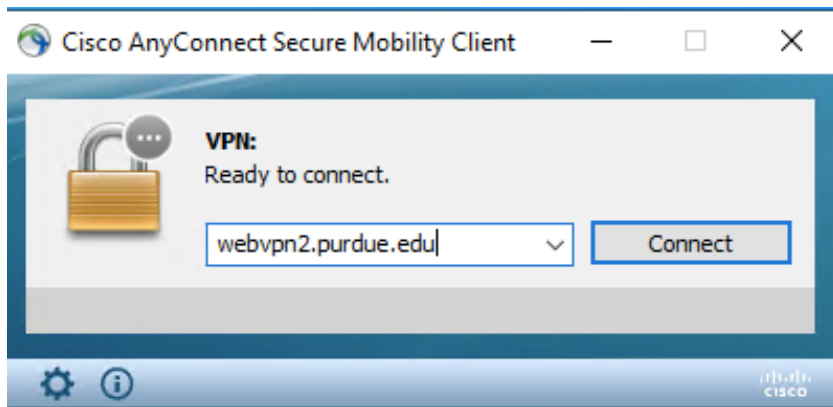


When finished please go to your download folder and install the Cisco software.

From there you will go under your start menu and look for the below to launch the client.



In the AnyConnect window that appears, put in the address webvpn2.purdue.edu into the box and click Connect:



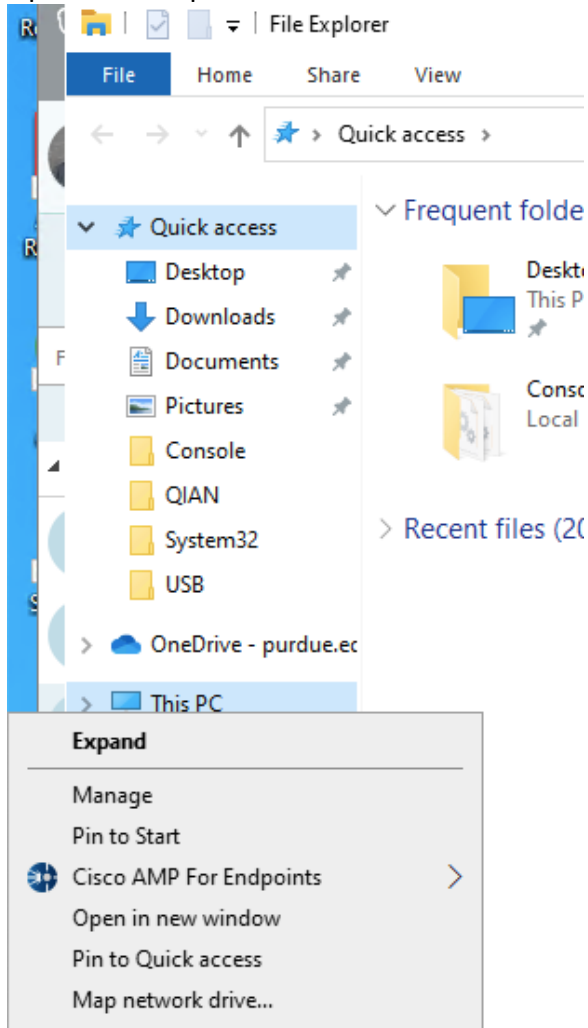
A login box will then appear.

Sign in with your username

For password, **USE BOILER KEY via your duomobile authentication**

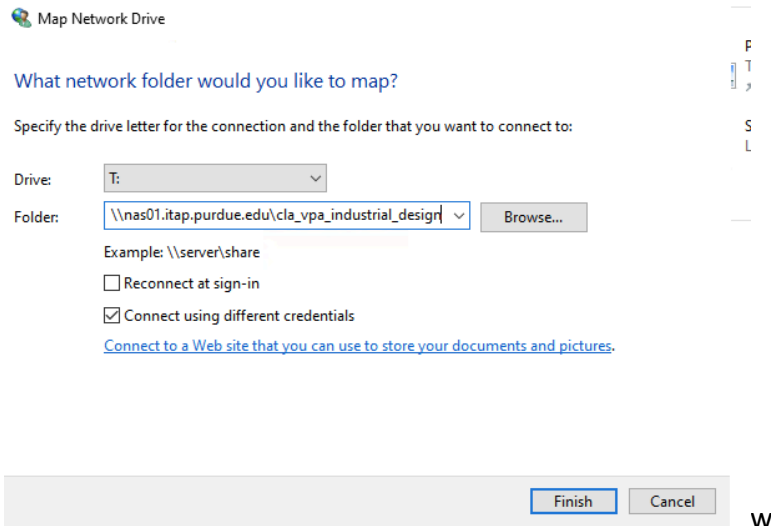
## Connect to the VPA Industrial Design drive:

Open a File Explorer window so that This PC can be seen as shown below



Right click with your trackpad or mouse on the words “Map network drive”

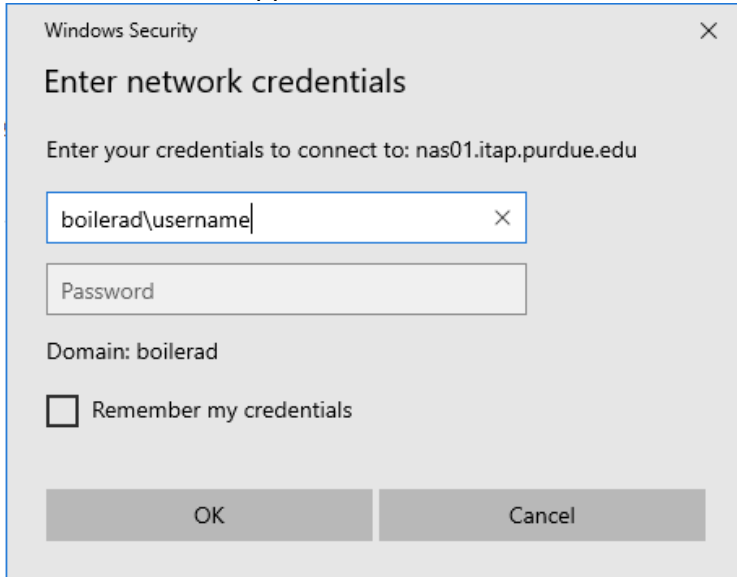
Another box will appear as shown below



You can choose any drive letter but the important items are

1. Under folder type in [\\nas01.itap.purdue.edu\cla\\_vpa\\_industrial\\_design\](#)
2. Click the connect using different credentials box
3. Click the Finish button

The next box that appears will look like the below



It is ESSENTIAL that you put in boilerad\careeraccount name in the top box and then enter your regular Purdue account password in the password box. Once that is done you will then click OK button and be able to see contents of the VPA Industrial Design Share.