

Connect to the VPA Industrial Design drive from off-campus

Install the Cisco VPN (Virtual Private Network)

In your web browser go to:

webvpn2.purdue.edu

A screenshot of a login dialog box titled 'Login'. It contains the instruction 'Please enter your username and password.' followed by two input fields: 'USERNAME:' and 'PASSWORD:'. Below the fields is a 'Login' button.

Sign in with your username

For password, **USE BOILER KEY**

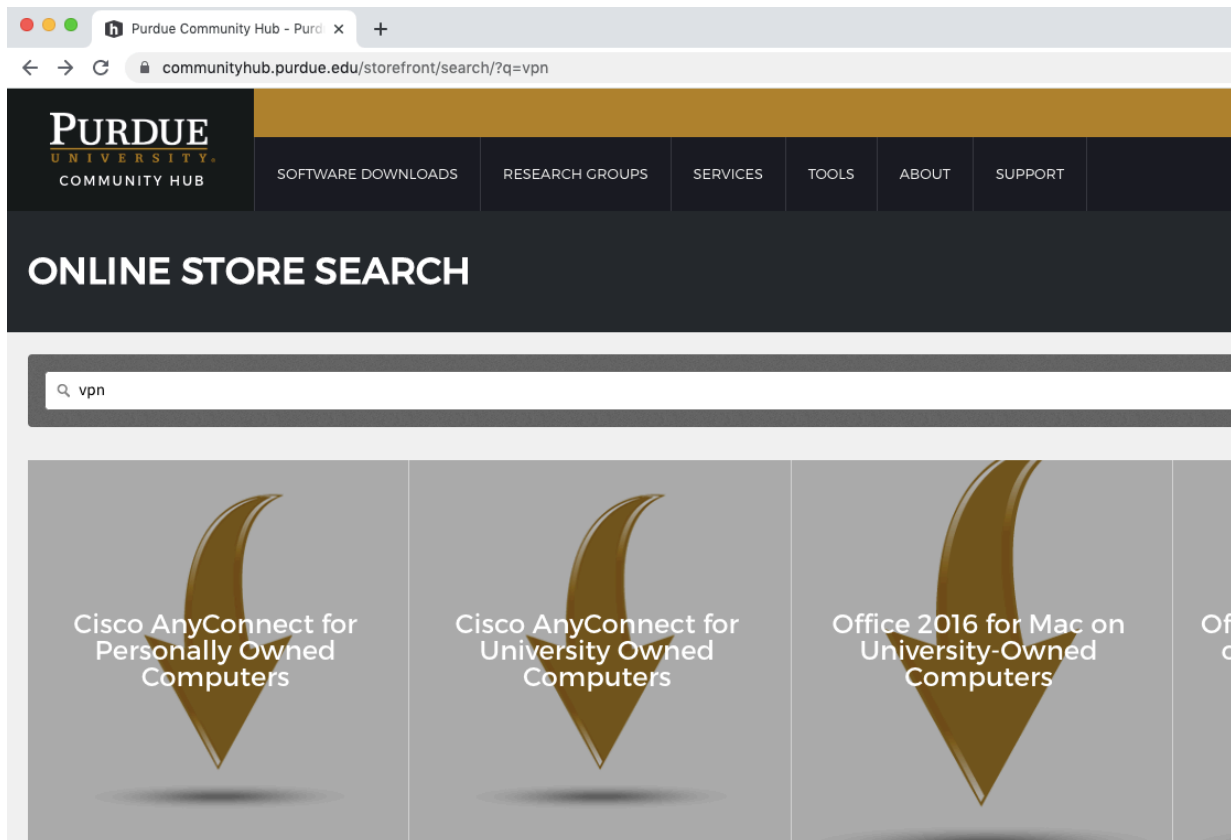
Click Download for MacOS

Install the Cisco AnyConnect Secure Mobility Client using Instructions on web page.

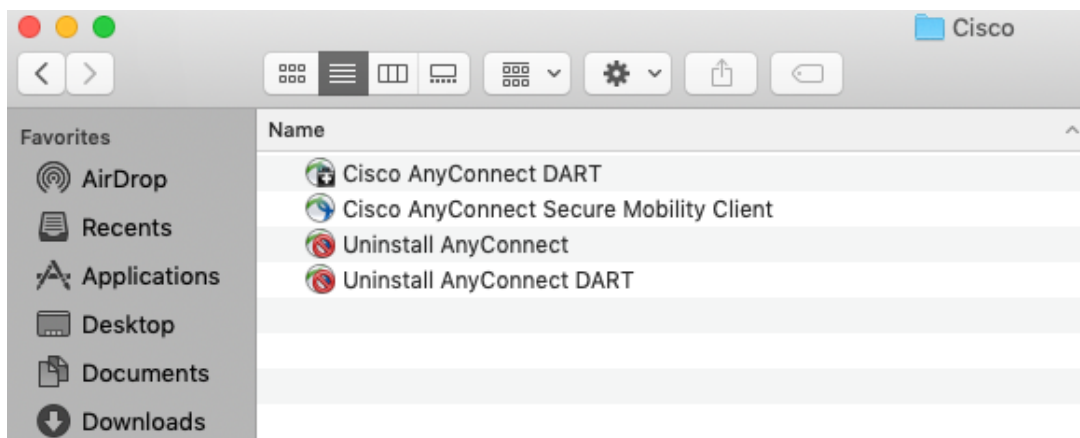
There is also an alternative site to download the software from if the above site fails to work. Please visit

<https://communityhub.purdue.edu/storefront/overview>

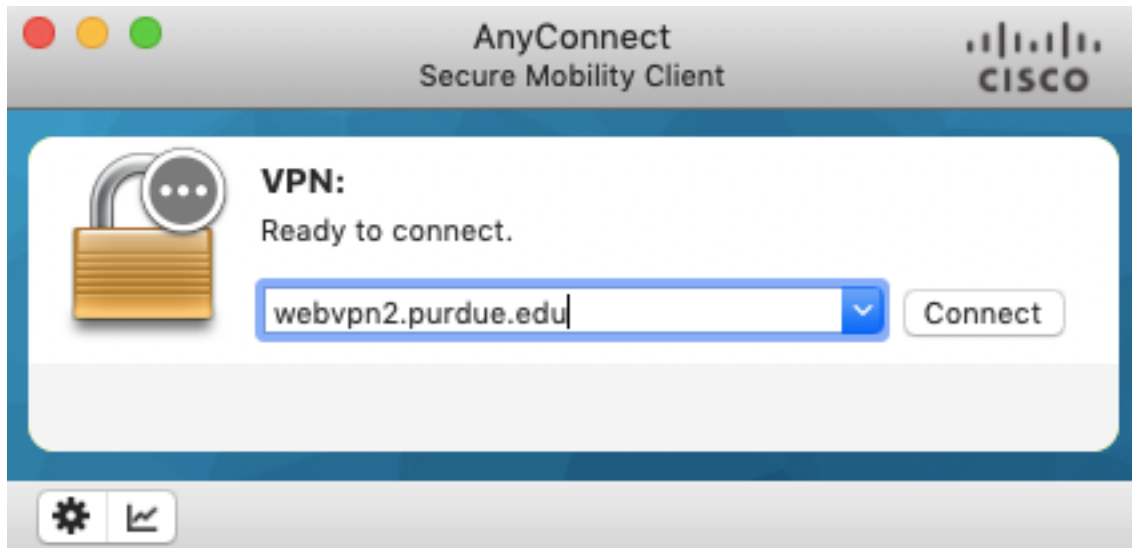
Once you are logged onto the site using your username and boiler key for password you will then be able to do a search for vpn as seen below.



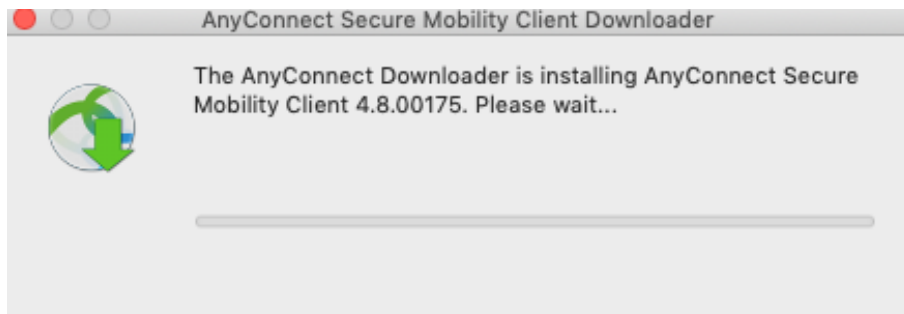
When finished, go to Applications folder and launch “Cisco AnyConnect Secure Mobility Client”



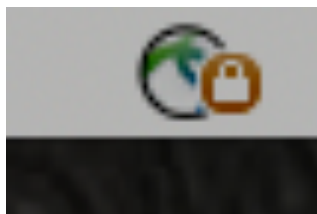
In the AnyConnect window, put in the address webvpn2.purdue.edu into the box and click Connect:



The software will then download an update if it needs one:

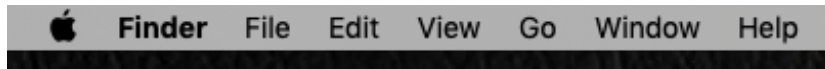


Once connected, you will see the Cisco VPN icon on the top toolbar with a padlock on it:



Connect to the Vpa Industrial Design drive:

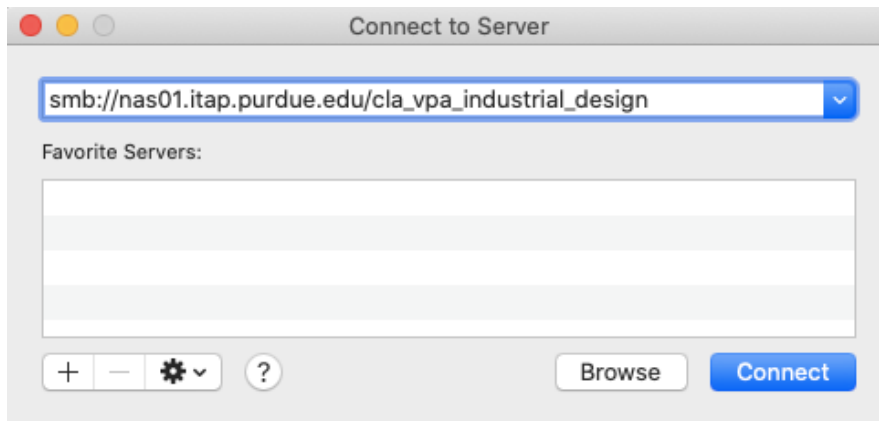
Click a BLANK area of the desktop so that the Finder is in the top toolbar:



Click the Go menu then Connect to Server...

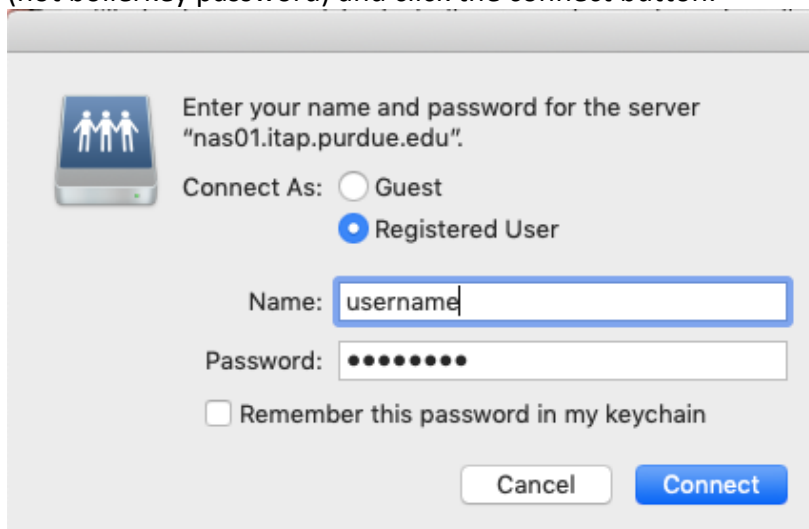
Server address:

smb://nas01.itap.purdue.edu/cla_vpa_industrial_design



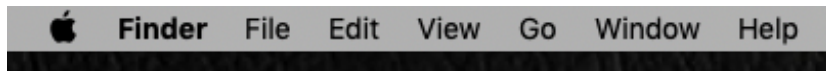
Click Connect

Another box will appear in this box please put your career account username and password (not boilerkey password) and click the connect button.



Due to the way the Finder is configured, you might not see the Industrial Design drive. To correct this, set the Finder options:

Click a BLANK area of the desktop so that the Finder is in the top toolbar:

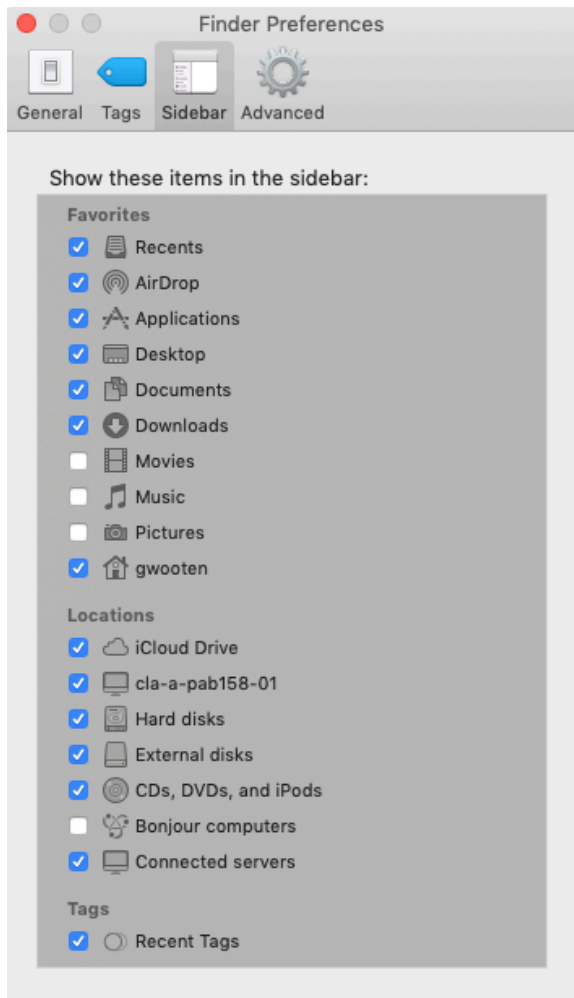


Click the Finder menu, then Preferences...

On the General tab, check the box next to "Connected servers" as shown:



On the Sidebar tab, check the boxes for your computer name and connected servers. Note that 'Bonjour Computers' feature does not work with Purdue network drives.



Now you will see the Vpa Industrial Design drive on your Desktop, and also listed in the Finder when you click on the name of your Mac computer.