

# Faustus: That Damned Woman

*Costume Design: Carlee Wuchterl*

# Design Statement

To establish the world of *Faustus: That Damned Woman* as an eternal hellscape, all characters that represent a demon, lucifer, or one of the seven deadly sins will use unsettling textures to keep them out of earthly reality. Skin-like textures will be represented through nylon and leather as well as animalistic scales and feathers. Although these characters play “humans,” their true nature will show through the costume of the human they represent.

These creatures directly contrast Johanna Faustus as she remains grounded in earth tones of beige and olive from the beginning. Her costumes transition into a more synthetic fabric, turning towards shades of black which represent her descent into damnation until she finally cycles back to her roots in a simple chemise dress which now displays all of the obstacle Johanna faces throughout the play.

# Medieval Religious Hell

- Hieronymus Bosch
  - Christ in Limbo
  - Garden of Earthly Delights – Hell

Jan van Eyck

Crucifixion and Last Judgement Diptych

Pieter Bruegel the Elder

Dull Gret





# Hell Mouth

- Pageant Wagons/Miracle Play
- Master of Catherine of Cleves,
  - *The Mouth of Hell, The Hours of Catherine of Cleves*





AI Generated

- Using only the term “Hell” in Charcoal portrait style, interior architecture, and concept art



# Polytheism (Asia)

- Fuyuko Matsui
  - Scattered Deformities in the End
  - Hell is one of six states of existence in the cycle of life
- Thangka of Wheel of Life
  - Eighteen hells in Tibetan Buddhism
  - Hot and Cold hell depicted
  - Naraka
- Diyu
  - Taoism
  - Earth prison
  - Illustration from the Jade Record





## Polytheism (Ancient Egypt)

- Condemned to the Lake of Fire
- Heart to be eaten by crocodile-headed Ammit

## Polytheism (Ancient Mesopotamia)

- Sumerian afterlife was a dark underground cave
  - “Shadowy version of life on earth”
  - Kur
- Ruled by Goddess Ereshkigal
- All souls resided here
  - Ate dust
  - Lineage pours libations on the grave to allow ancestors to drink
- Entrance in the mountains with seven gates





# Polytheism (Ancient Greek)

- Hades
  - River Styx
  - Asphodel Meadows
    - Ordinary souls sent here
  - Elysium
    - Reserved for those who were great heroes on earth
  - Tartarus
    - Farthest pit where Titans are sent to be punished
    - Parallels to Christianity in terms of "fallen angels"





# Theoretical Hell – Liminal Spaces/Backrooms

- Non-religious purgatory
  - Eerie, forlorn, surreal, transitional
  - Creepypasta, internet culture, unnaturally empty
  - Accidentally finding the entrance to a backroom
  - Feels eerily familiar even if you've never been there before
    - Been in these locations in dreams
    - Live in the subconscious mind
  - Uncanny valley





Hell is other  
people

- *No Exit* (Jean-Paul Sartre)
- *The Good Place*





# Practice-Based Research and Challenges

- Easy-to-wash blood, ash, and fabric
- Transformation costumes
  - Lucifer/Thomas mask
  - Faustus/Death
  - Figure masks
- Quick changes
  - Characters never leave stage

Scene	Johanna Faustus *-ADD Weathered makeup **-Hooded cape	Mephistopheles *- Hooded Cape	Lucifer/Thomas	Envy	Wrath	Lust	Pride *-Horns and Hooves	Greed	Gluttony	Sloth	Angel
Pre-show		Base	Lucifer	Envy	Wrath	Lust	Pride	Greed	Gluttony	Sloth	?
I.1	1600s			Katherine	Cornelia	Violet		Witchfinder	Judge	Guard	
I.2	1600s				Cornelia	Violet					
I.3	1600s		Thomas								
I.4	1600s										
I.5	1600s						Newbury				
I.6	1600s*				Cornelia	Violet					
I.7	1600s	1600s	Lucifer	Envy	Wrath	Lust	Pride	Greed	Gluttony	Sloth	
I.8	1600s**	1600s*		Isabel			Newbury*	Figure 1	Figure 2	Figure 3	Girl
I.9	1600s	1600s							Judge		
I.10	1600s	1600s	Thomas								



Scene	Johanna Faustus	Mephistopheles	Lucifer/Thomas	Envy	Wrath	Lust	Pride	Greed	Gluttony	Sloth	Angel
II.1	1800s (Montage)	1800s						Dresser	Dresser	Dresser	
II.2	1800s	1800s									Singer
II.3	1800s			Garrett							
II.4	1800s	1800s		Garrett							
II.5	Transition			Garrett							
II.6	1900s					Marie	Pierre				
II.7	1900s							Famine	War	Pestilence	Singer
II.8	1900s	1900s						Famine	War	Pestilence	
II.9	Transition										
II.10	2036	2036			Jenny						Singer
II.11	2036 + Death	2036						Famine	War	Pestilence	
II.12	Base Dress	Base	Lucifer/Thomas	Katherine	Alice						

# Color/Texture Palette



Envy



Wrath



Lust



Pride



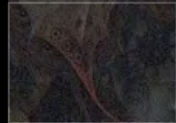
Greed



Gluttony



Sloth





# Welcome to Hell

Envy



Lucifer



Gluttony



Mephistopheles



Sloth



Wrath



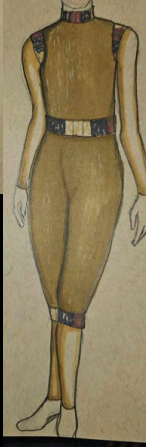
Lust



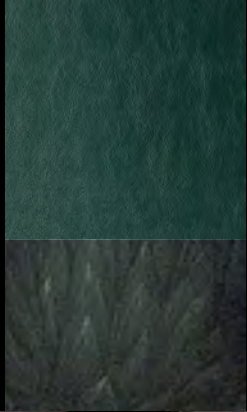
Pride



Greed



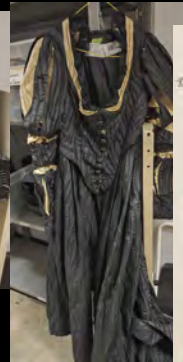
# Envy



Katherine



Doctor Garrett

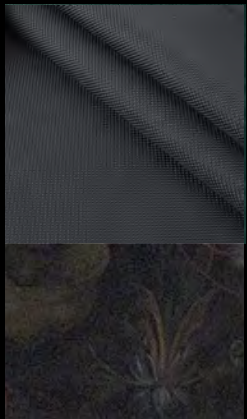


Isabel





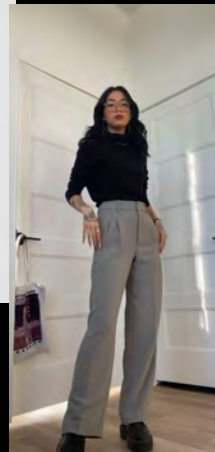
# Wrath



Cornelia



Jenny



Alice



# Lust



## Violet

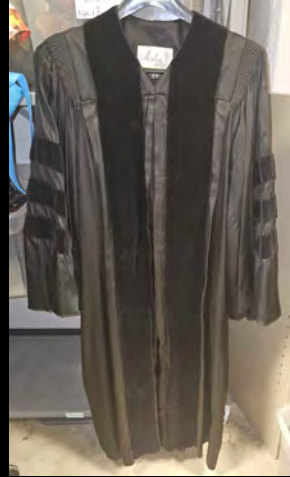


## Marie

# Pride



## Doctor Newbury



Pierre



# Greed



# Witchfinder



# Figure/Dresser

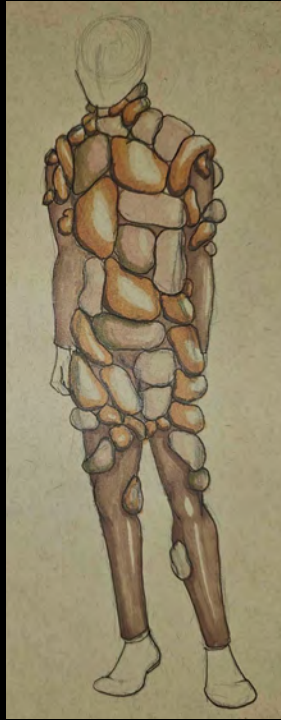


# Famine





# Gluttony



# Judge

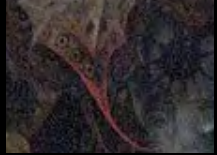


# Figure/Dresser

# War



# Sloth



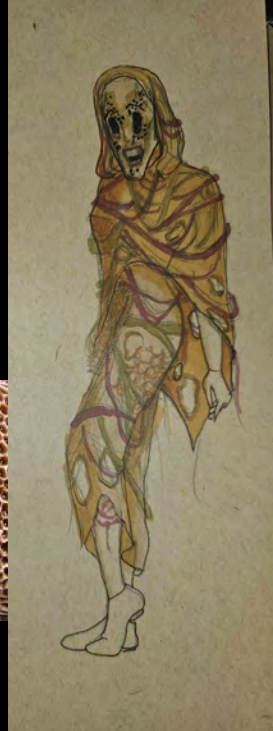
# Guard



# Figure/Dresser



# Pestilence





# Mephistopheles



1600s



1800s-1900s

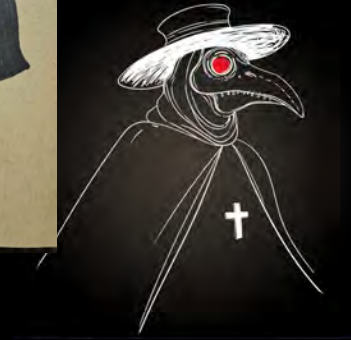


2036





# Thomas

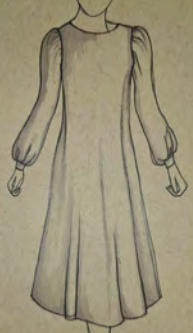


# Lucifer

# Johanna Faustus



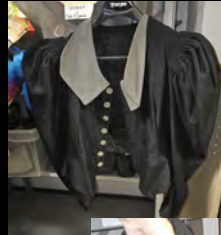
Base Dress



1  
6  
0  
0  
s



1800s



1  
9  
0  
0  
s



2036>  
Death



Ending (Base  
Dress)

## Bibliography

- Alger, William Rounseville, and Ezra Abbot. *A Critical History of the Doctrine of a Future Life : with a Complete Bibliography of the Subject*. Fourth edition, thoroughly revised., W.J. Widdleton, publisher, 1866.
- “Ammit & Thoth Await the Judgement of a Soul.” *World History Encyclopedia*, <https://www.worldhistory.org#organization>, 20 Aug. 2023, [www.worldhistory.org/image/12848/ammit--thoth-await-the-judgement-of-a-soul/](http://www.worldhistory.org/image/12848/ammit--thoth-await-the-judgement-of-a-soul/).
- Bosch, Hieronymus. *The Garden of Earthly Delights Triptych. 1490 - 1500. The Collection - Museo Nacional Del Prado*, 21 June 2023, [www.museodelprado.es/en/the-collection/art-work/the-garden-of-earthly-delights-triptych/02388242-6d6a-4e9e-a992-e1311eab3609](http://www.museodelprado.es/en/the-collection/art-work/the-garden-of-earthly-delights-triptych/02388242-6d6a-4e9e-a992-e1311eab3609).
- Bruegel, Peter. “Dull Gret.” *Wikipedia*, Wikimedia Foundation, 2 Aug. 2023, [en.wikipedia.org/wiki/Dull\\_Gret](https://en.wikipedia.org/wiki/Dull_Gret).
- Bush, Chris. *Faustus: That Damned Woman*. Nick Hern Books, 2020.
- Catherine, and John Plummer. *The Hours of Catherine of Cleves*. George Braziller, 1966.
- Claykid12345. “The Backrooms.” *Creepypasta*, 9 Jan. 2022, [www.creepypasta.com/the-backrooms/](http://www.creepypasta.com/the-backrooms/).
- Faust, et al. *The History of Doctor Johann Faustus*. [University of Illinois Press], 1965.
- Follower of Hieronymus Bosch. “Christ in Limbo.” *Indianapolis Museum of Art Online Collection*, [collection.imamuseum.org/artwork/79340/](http://collection.imamuseum.org/artwork/79340/). Accessed 23 Aug. 2023.
- González-Wippler, Migene. *The Complete Book of Amulets & Talismans*. Llewellyn Publications, 2013.
- González-Wippler, Migene. *What Happens after Death: Scientific & Personal Evidence for Survival*. Llewellyn, 1997.



## Bibliography (cont.)

Henderson, A. A. R. “Tibullus, Elysium and Tartarus.” *Latomus*, vol. 28, no. 3, 1969, pp. 649–53.

“Jade Calendar.” 玉歷寶鈔, [www.bfn.org/book/books2/1471.htm](http://www.bfn.org/book/books2/1471.htm). Accessed 23 Aug. 2023.

Mandala, et al. “The Wheel of Life - Samsara.” *Thangka Mandala*, 21 Mar. 2022, [www.thangka-mandala.com/blog/the-wheel-of-life/](http://www.thangka-mandala.com/blog/the-wheel-of-life/).

Marlowe, Christopher. *Dr. Faustus*. Dover Publications, 2012.

Matsui, Fuyuko. “Deformities in the End.” *Fuyuko Matsui*, [www.matsuifuyuko.com/scattered-deformities-in-the-end-e/](http://www.matsuifuyuko.com/scattered-deformities-in-the-end-e/). Accessed 23 Aug. 2023.

“Passing the River Alphabet.” *Passing the River / Passage Du Fleuve Alphabet*, [www.omniglot.com/conscripts/ptr.htm](http://www.omniglot.com/conscripts/ptr.htm). Accessed 23 Aug. 2023.

Sartre, Jean Paul. *No Exit; a Play in One Act*. [Acting ed.], French, 1958.

Schimmel, Solomon. *The Seven Deadly Sins : Jewish, Christian, and Classical Reflections on Human Nature*. Free Press, 1992.

van Eyck, Jan. “The Crucifixion; the Last Judgment.” *The Metropolitan Museum of Art*, [www.metmuseum.org/art/collection/search/436282](http://www.metmuseum.org/art/collection/search/436282). Accessed 23 Aug. 2023.

