



**PURDUE**  
UNIVERSITY

**THINK BROADLY.  
LEAD BOLDLY.**

SCHMIDT  
  
ASSOCIATES

# Master Plan Goals

- Provide a comprehensive analysis of current space utilization throughout CLA.
- Benchmark CLA against other Big 10 CLA's.
- Create a plan that increases CLA space utilization and provides collaborative environments.
- Enhance the Undergraduate, Graduate, and Faculty experience.
- Attract new Undergraduate and Graduate students \$ growth in X years.
- Develop plan to enhance the overall aesthetic and brand of CLA space ***at the College and Department level.***
- Identify unmet space needs in the CLA and provide a range of options that will meet those needs.
- Develop college level principles for space utilization consistent with Purdue guidelines.
- Define the budget for proposed initiatives, including; phasing and the implications of time (special note of 2019 as intermediate step).
- Create a compelling, fundable case statement.
- Create more quality, quantity, and improved proximity.
- ***The Master Plan will address Health, Safety and the Human Social Experience of Students, Staff, and Faculty.***



Buildings Occupied by CLA		ASF	PAO	HEAV	BRNG	STON	SC	FPRD	UNIV	STEW	REC	PRRN	LAMB	PHYS	YONG	PRCE	LILY
CLA Departments	Liberal Arts Administration	9,893	339	266	8,877	116	179		116								
	Liberal Arts Counseling	6,069			6,069												
	Anthropology	10,010				9,259											751
	Communication	14,532			10,813					2,520		254			945		
	English	33,795		33,795													
	History	7,359			123				5,429		1,807						
	Interdisciplinary Studies	6,843		3,324	3,159					207	153						
	Languages and Cultures	19,934		762			18,592										580
	Philosophy	4,824			4,295						334						195
	Political Science	6,891			6,891												
	Sociology	11,135		1,730		9,405											
	Visual and Performing Arts	101,596	88,759						5,748		2,618		1,761	1,573	1,137		
	<b>Total ASF - sorted by Building</b>	<b>232,881</b>	<b>89,098</b>	<b>39,877</b>	<b>40,227</b>	<b>18,780</b>	<b>18,771</b>	<b>5,748</b>	<b>5,545</b>	<b>5,345</b>	<b>2,294</b>	<b>2,015</b>	<b>1,573</b>	<b>1,137</b>	<b>945</b>	<b>775</b>	<b>751</b>



Comparison Data- College of Liberal Arts		Student/Space Comparison										
Updated 5/2/2016												
	Name of College	Total University Enrollment *	Full time	Majors- Undergrad	Major- Graduate	Faculty	Departments/ Academic Units	Majors	Buildings	Sq. Footage	SF/ Undergrad	
University of Illinois	Liberal Arts and Sciences	45,140	41,414	11,000		600	60	70	60	1,241,092	113	
Indiana University	College of Arts and Sciences	46,416	37,670	10,000	2,800	900	80	70	57	720,509	72	
University of Iowa	College of Liberal Arts and Sciences	29,970	24,424	16,750	2,300	700	39	64	38	1,033,013	62	
University of Maryland	College of Arts and Humanities	37,610	32,938	3,100	900	322	14	25	12		0	
University of Michigan	Literature, Science and the Arts	43,625	41,101	17,307	2,339		75	100			0	
Michigan State	College of Arts and Letters/and Arts and Humanities	50,081	43,708	2,265		250	8	24	13	176,000	86	
	Residential College in Arts and Humanities					38			1	19,000		
University of Minnesota	College of Liberal Arts	51,147	38,623	13,676	1,676	531	31	65	31	759,685	56	
University of Nebraska-Lincoln	College of Arts and Sciences	25,006	21,364	3,912	1,030	518	59	35	8	582,841	149	
Northwestern	Weinberg College of Arts and Sciences	21,554	17,022	790	412	336	53	45	39	672,000	851	
	"true" liberal arts								15	272,000		
Ohio State	College of Arts and Sciences	58,322	50,624	16,562	2,761	2,000	38	80	59	1,600,000	97	
Penn State	College of the Liberal Arts	47,040	45,191	6,000	800		23	50	16	296,046	49	
Purdue	College of Liberal Arts	39,752	34,653	2,698	1,047	584	10	50	15	232,881	86	
Rutgers	School of Arts and Sciences	48,378	40,970	4,000			34	96	68	830,000	208	
University of Wisconsin-Madison	College of Letters and Science	42,598	38,149	14,994	4,231	800	45	70	44	1,534,113	102	

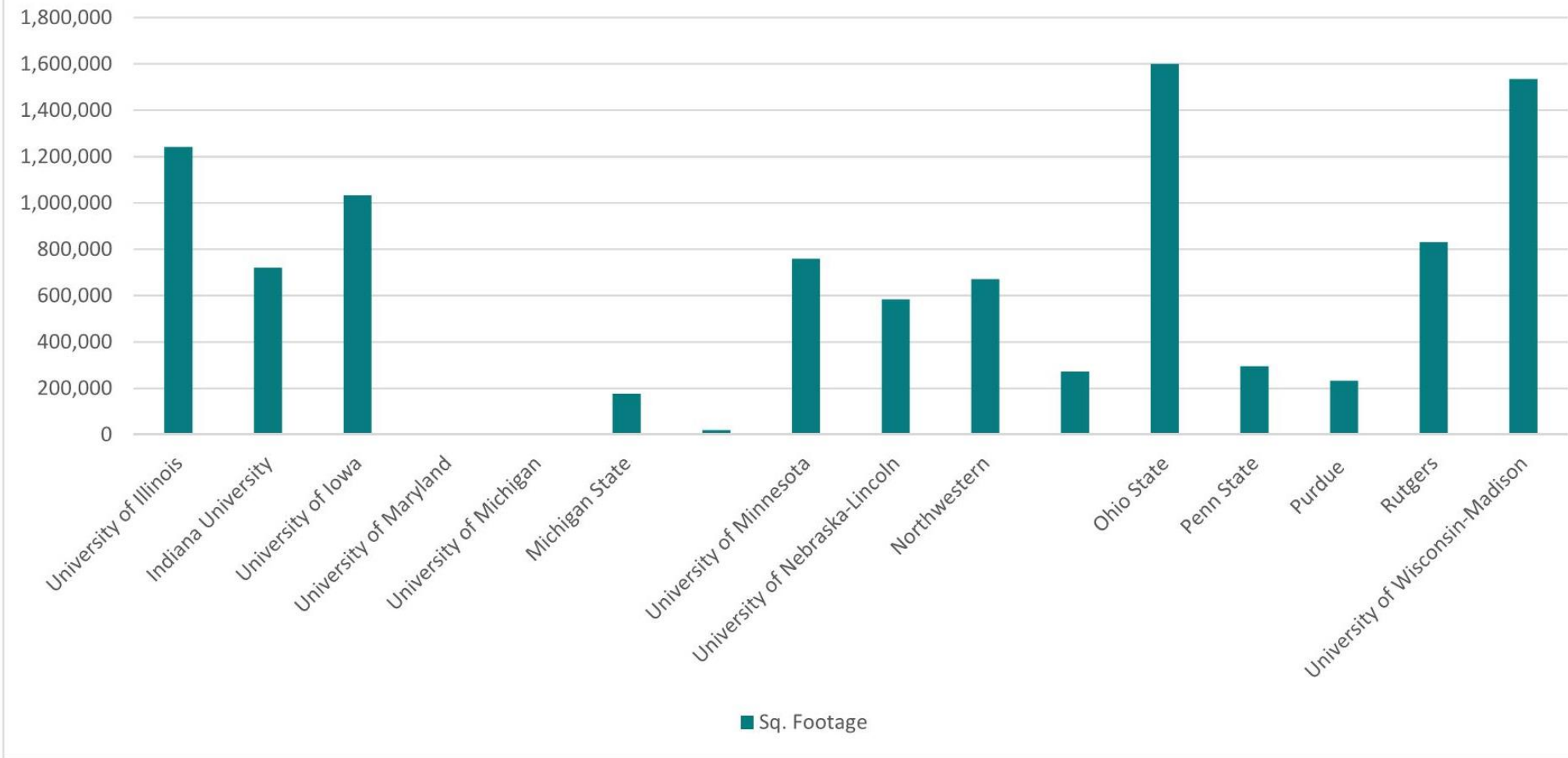
\* Reported <http://www.bigten.org/schools/wisc/big10-schools-wisc-body.html>

CIC Committee on Institutional Cooperation 2014 data

indicates info directly from college/university

? No Hard Sciences

Sq. Footage- Liberal Arts Space



# What We Have Heard

What features are the most helpful?

Windows/Common areas (where they exist), ITAP labs, updated classroom tech, building location, adjacency to colleagues

How do you use your building?

Meetings, Office Hours, Teaching

How do you use your own space?

Class prep, research and meeting with people in my office

If you could change something in your space, what would it be?

See most common requests. Also better furniture and equipment, more efficient layouts, more printers, more storage, “get a new building”, more art, more research spaces, outdoor education space, better acoustics, update like Grissom

What are 5 things we should know as we think about long term planning?

See most common Requests

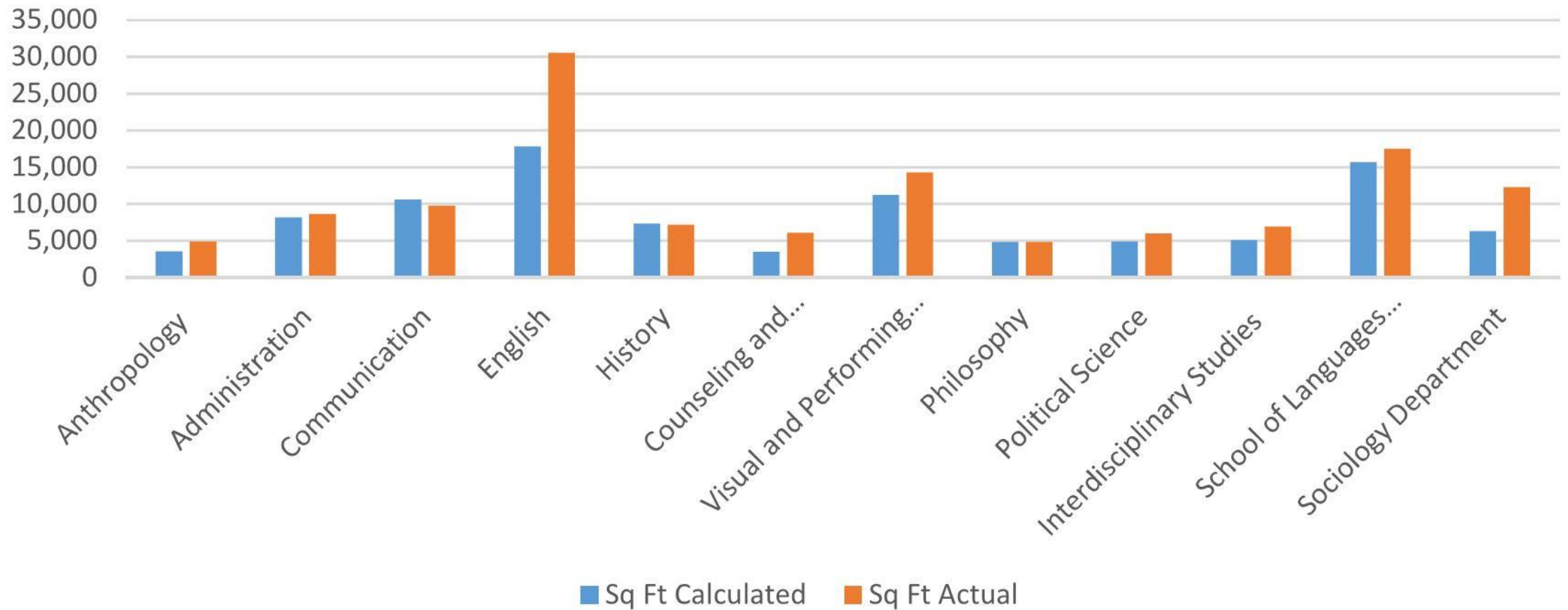
Start with the basics- foundations before frills

Involve the users in the redesign- particularly of the classroom layouts and technology

Building upgrades (see most common requests)

Plan for the future

## Calculated vs Actual Sq Ft- Office Guidelines



# Assessment of Existing Space

- Utilization
- CLA Identity
- Department Identity
- Class/Lab Appropriateness
- Student Collaboration Space
- Faculty Office/Support Space

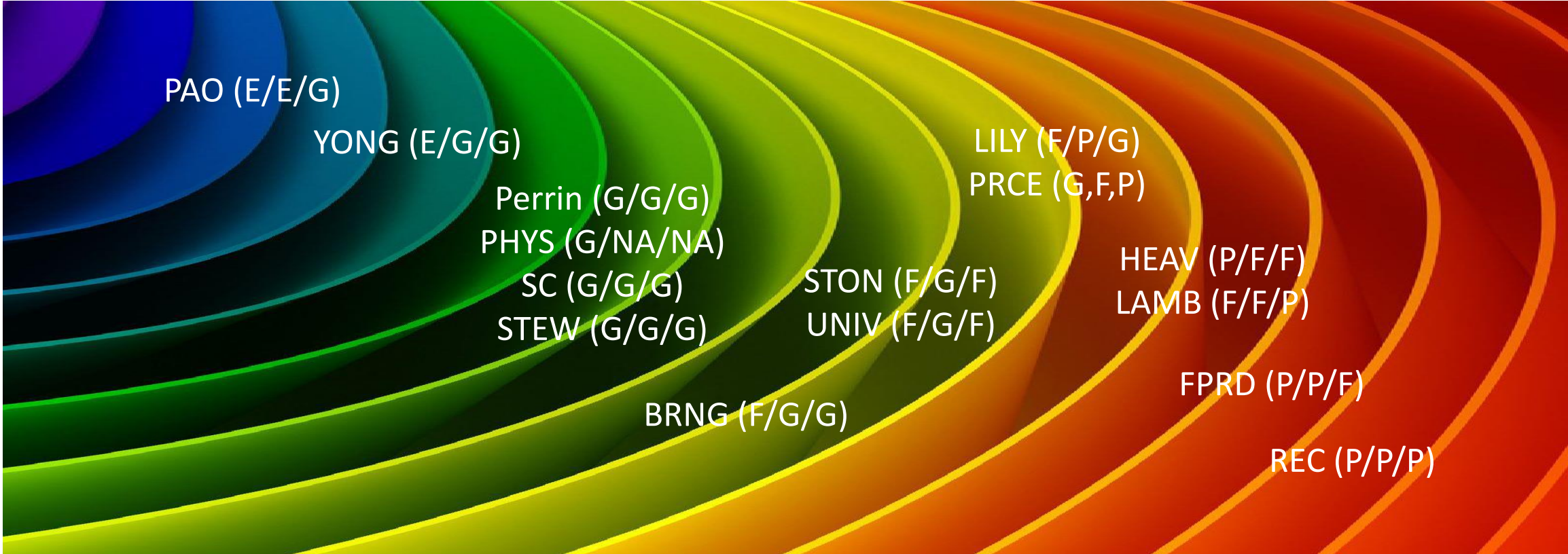
- Evaluation Scale:

- Excellent
- Good
- Fair
- Poor

★ Department Home



# Building Inequity (Excellent / Good / Fair / Poor)

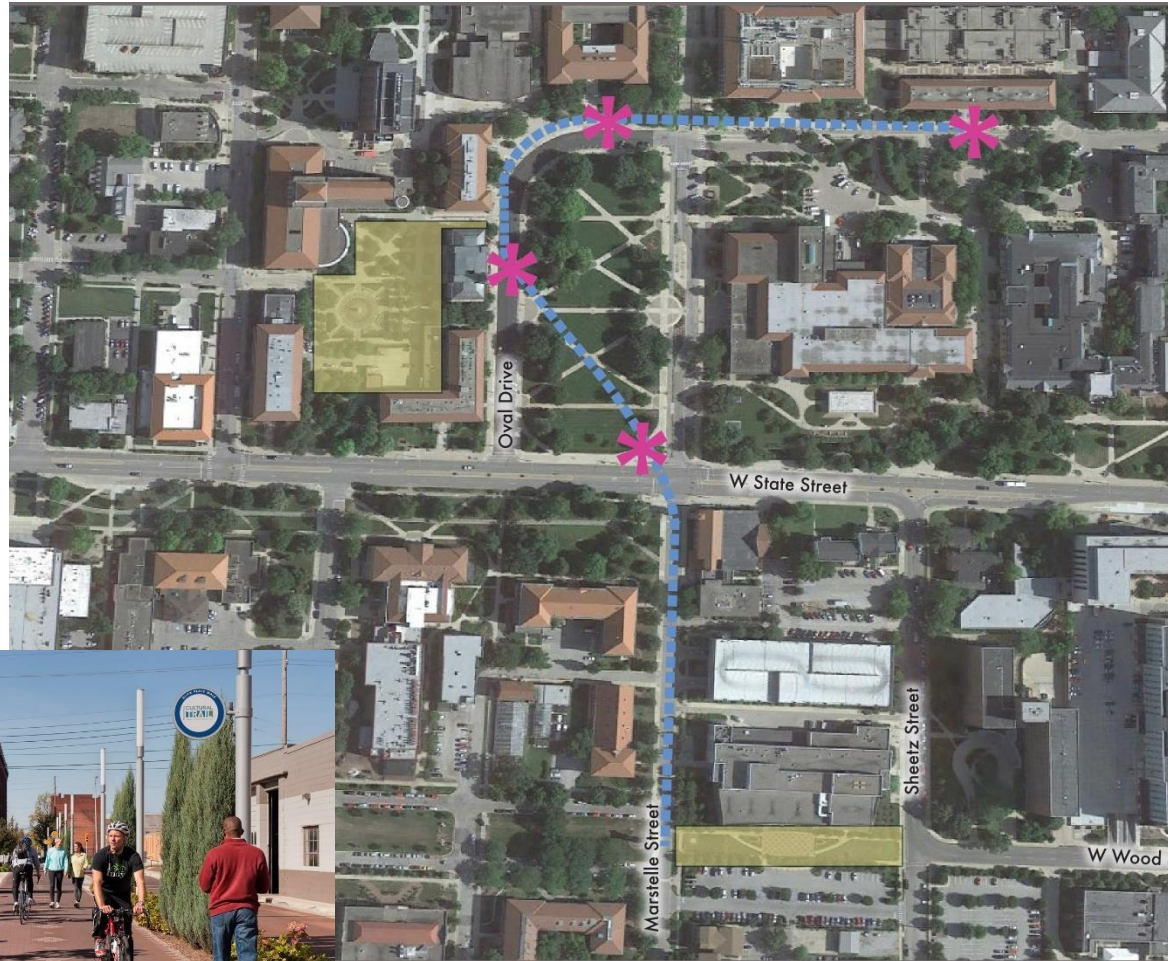


# Overall Recommendations - DRAFT

1. Increase CLA brand awareness and apply consistently at the campus, building, and departmental levels
2. Develop Liberal Arts Quad/Trail
3. Improve utilization through reconfiguration and relocation
  - Identify CLA specific buildings
4. Develop Administration/Faculty/Staff/Student Collaboration Space

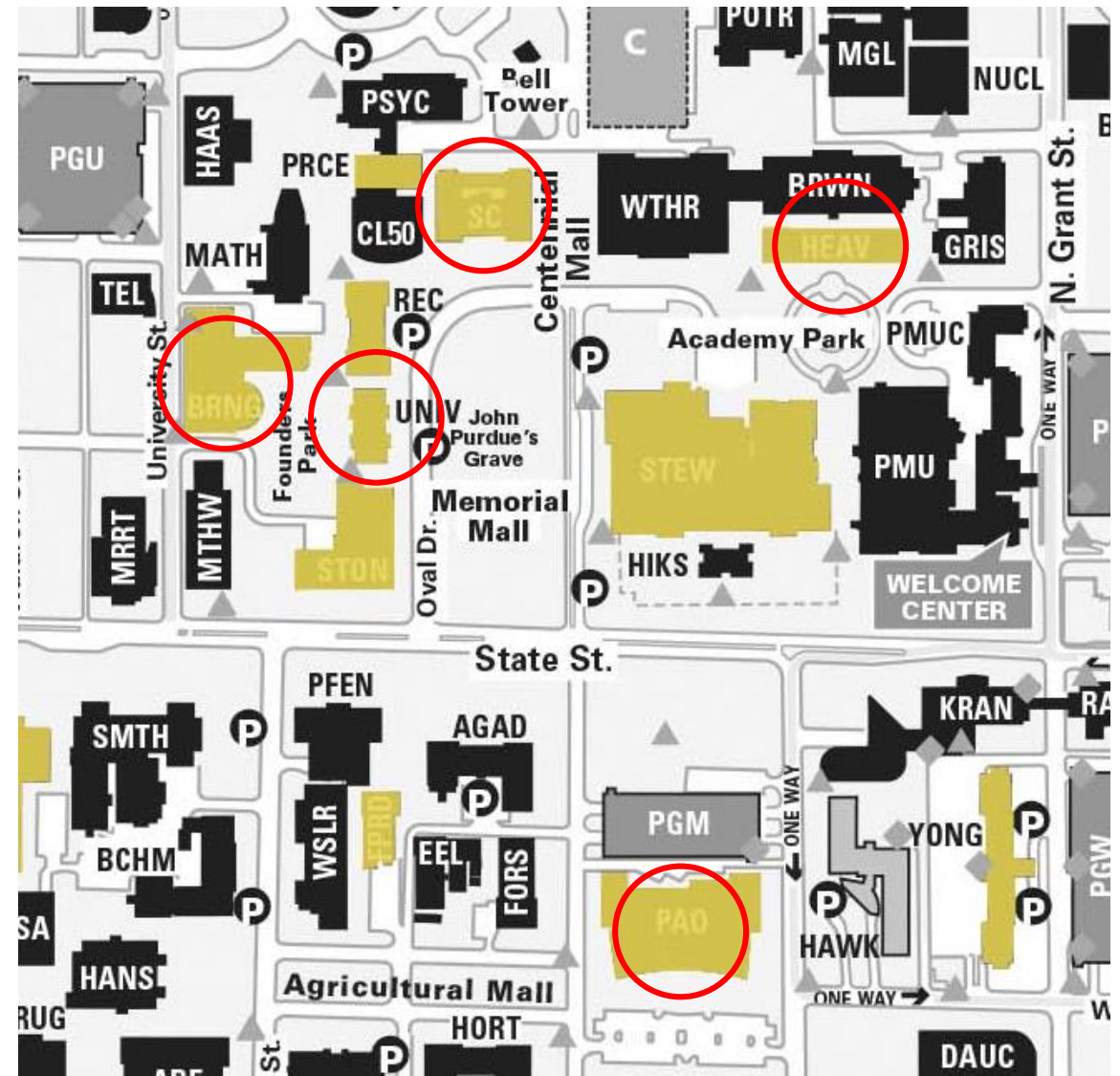
# Develop Liberal Arts Quad / Trail

- Integrate with Purdue Arboretum Explorer
- Sculptures
- Bike Trails
- Lighting
- Murals
- Plazas
- Trails



# Identify and Develop Specific Buildings as CLA

- Beering Hall
- University Hall
- Stanley Coulter Hall
- Heavilon Hall
- Pao Hall





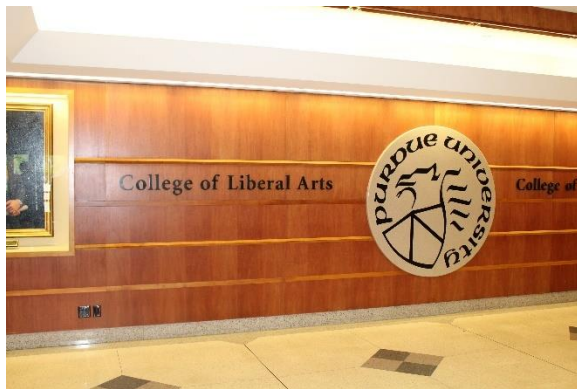
# Recommendations

- Improve functionality/aesthetic of basement commons
  - Comfortable seating
  - Refreshed finishes
- Improve functionality of Departmental Administration Offices
  - Furniture, finish, and technology upgrades
- Identify and address restroom plumbing issues
- Address 7<sup>th</sup> floor Conference Room access?



# Recommendations

- Build on branding for all Departments through Department-specific signage
  - Office locations
  - Corridors
- Incorporate branding for all Departments at Department entries
- Strategically incorporate waiting in halls





**PURDUE**  
UNIVERSITY

University Hall  
(UNIV)

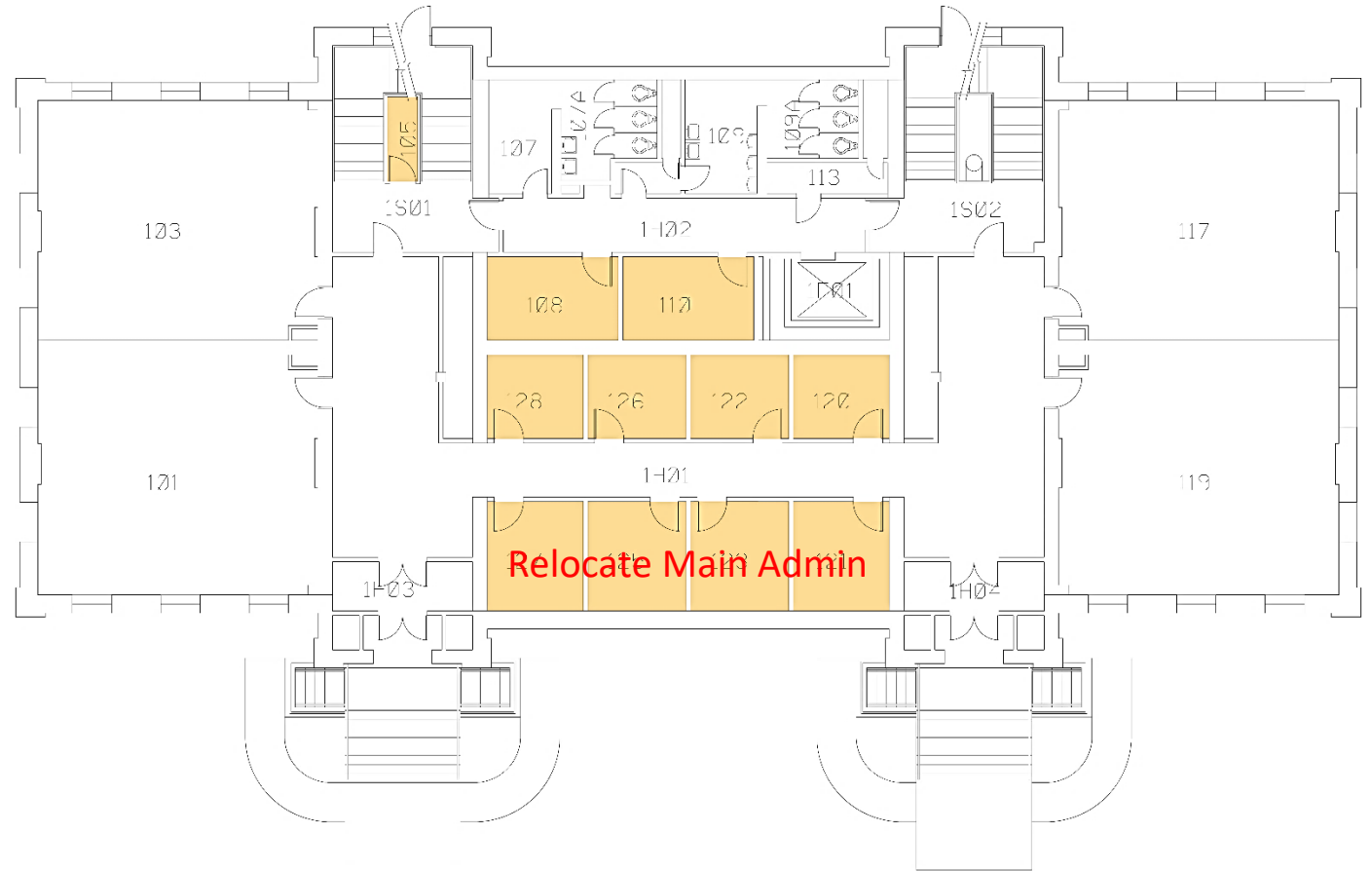
**THINK BROADLY.**  
**LEAD BOLDLY.**

SCHMIDT  
  
ASSOCIATES



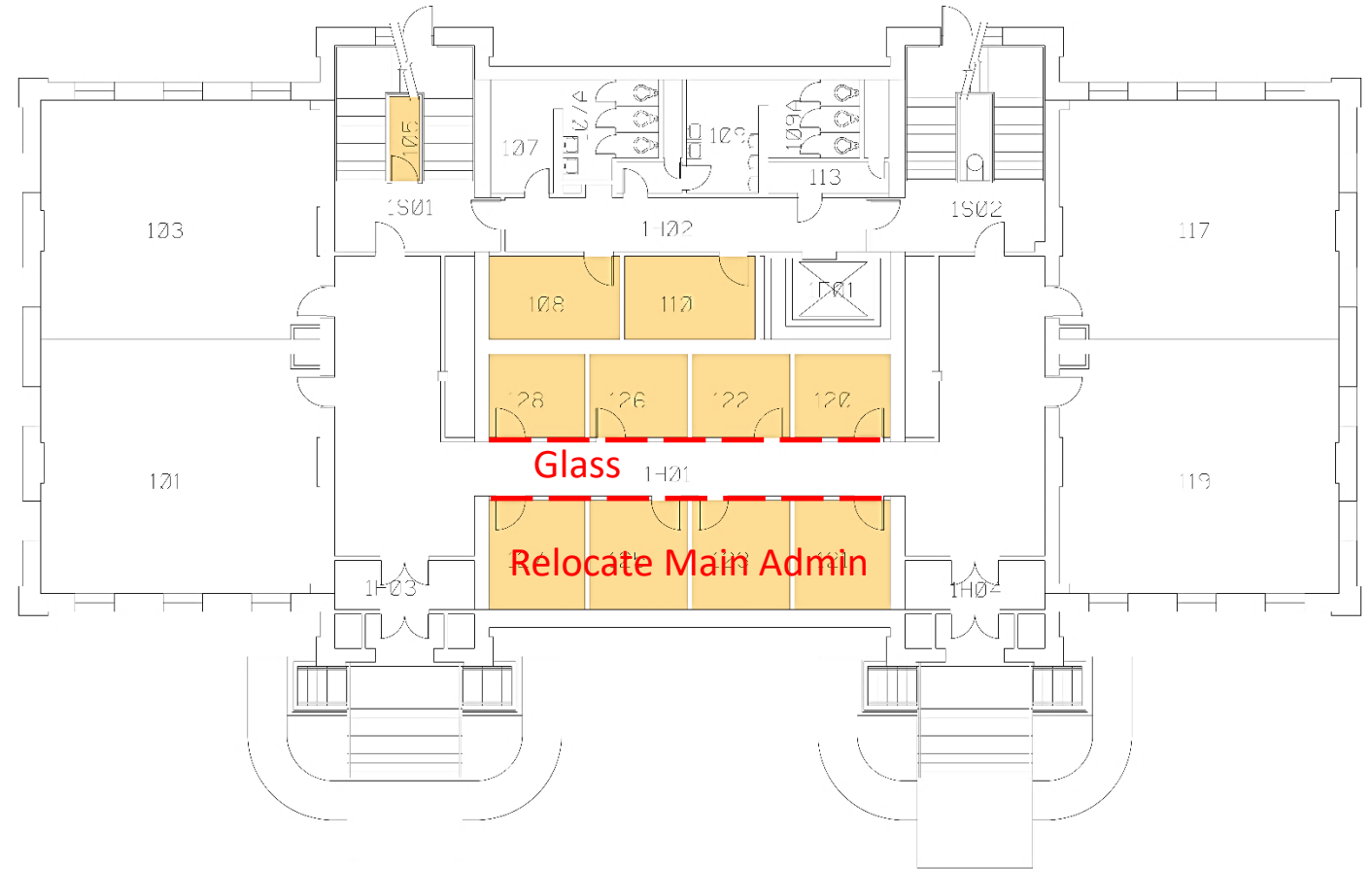
# Recommendations

- Move Department offices near front door



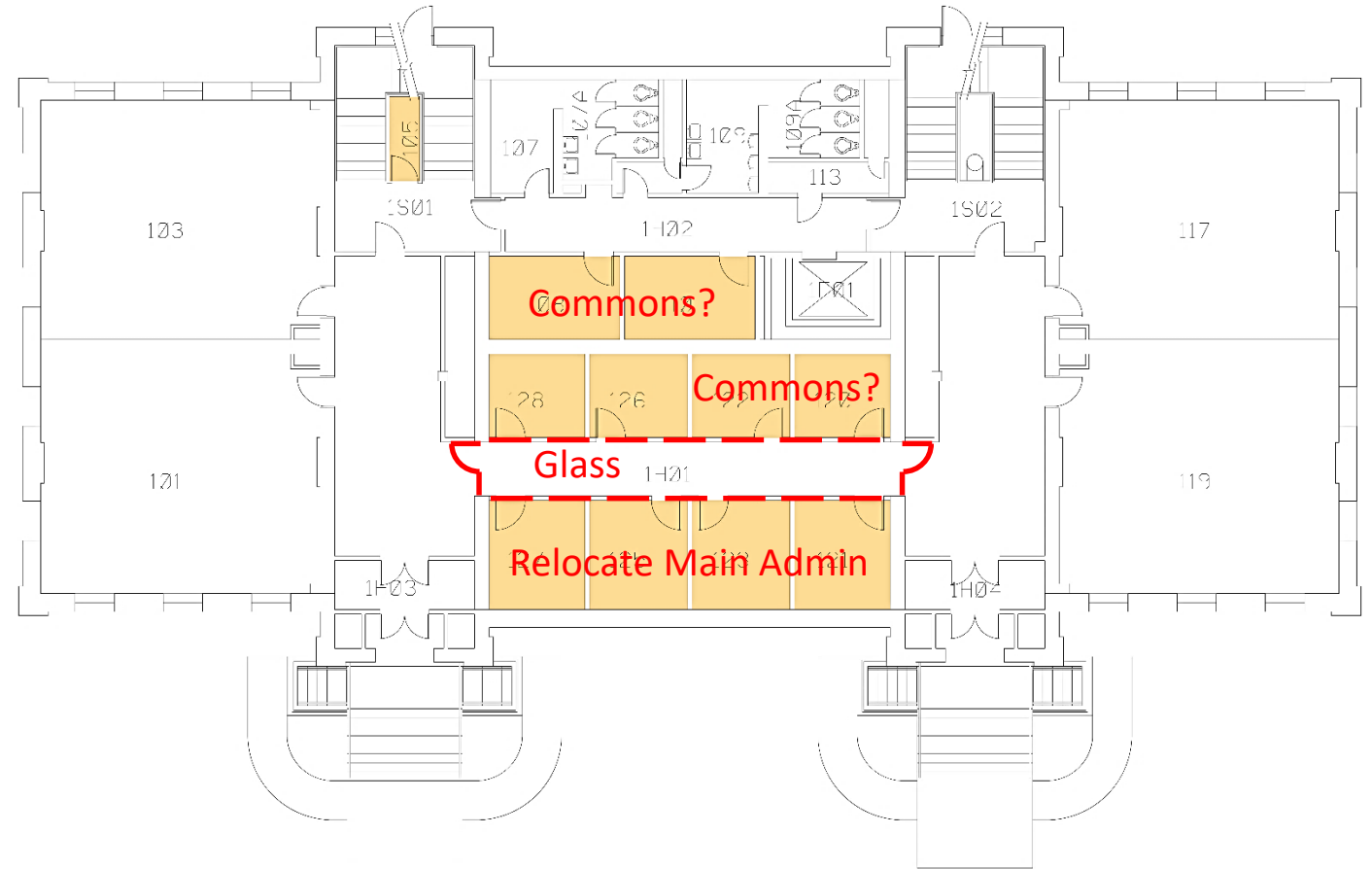
# Recommendations

- Move Department offices near front door
- Utilize glass walls to bring in daylight



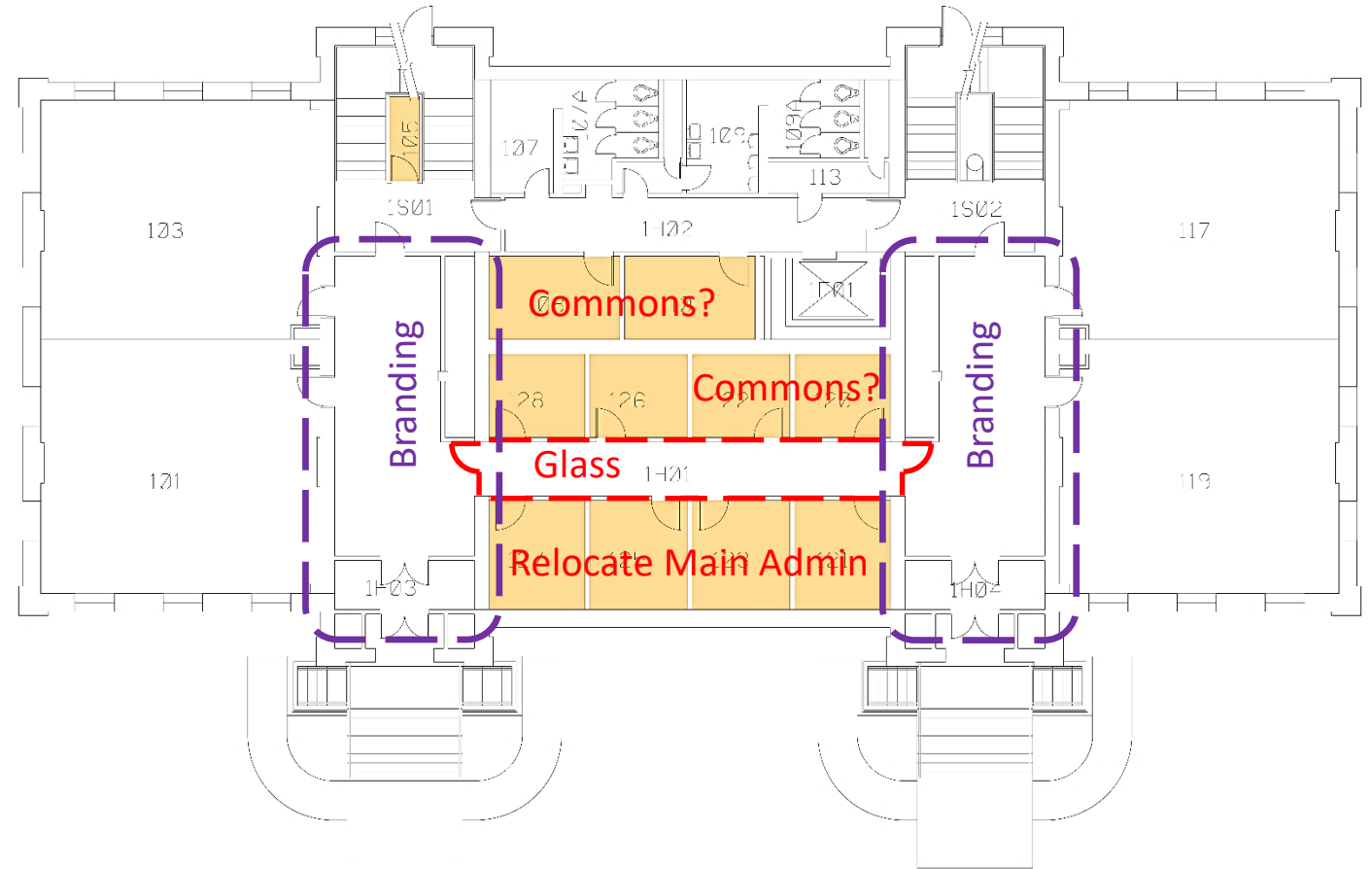
# Recommendations

- Move Department offices near front door
- Utilize glass walls to bring in daylight
- Create Office suites
  - Noise control
  - Smaller private offices can increase collaboration space



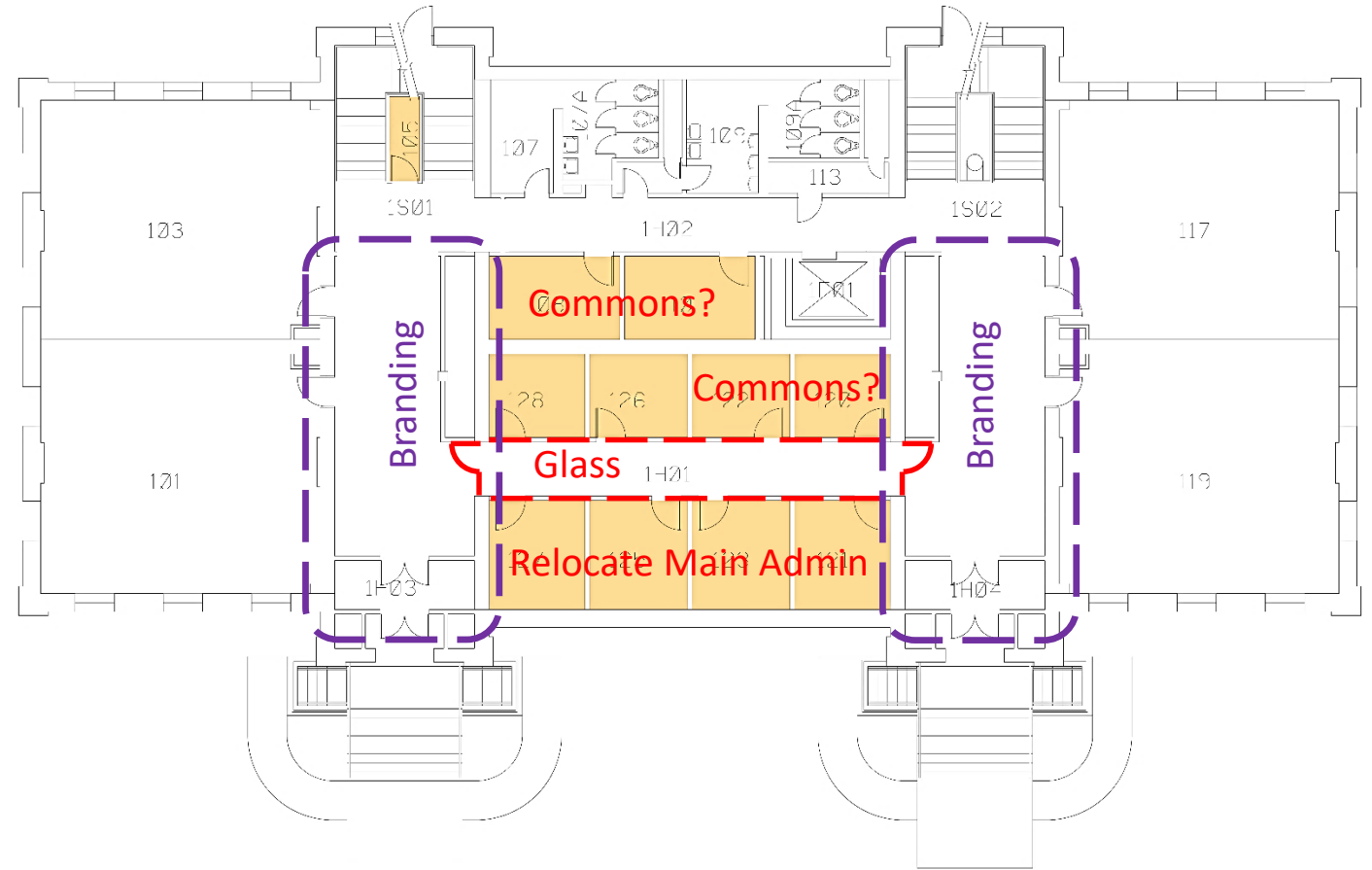
# Recommendations

- Move Department offices near front door
- Utilize glass walls to bring in daylight
- Create Office suites
  - Noise control
  - Smaller private offices can increase collaboration space
- Incorporate exterior historical character on the interior



# Recommendations

- Move Department offices near front door
- Utilize glass walls to bring in daylight
- Create Office suites
  - Noise control
  - Smaller private offices can increase collaboration space
- Incorporate exterior historical character on the interior
- Explore removal of Stair doors





# Recommendations

- Increase usability of Courtyard through enhanced access and improved amenities
- Introduce branded Commons Space at front door and mural wall
- Improved hangout spaces in halls for students



# Recommendations

- Renovation of Commons (G083)
- Art Integration
  - Use consistent colors for branding and Liberal Arts art
- Speech and Language Lab reconfiguration
- Very dated – needs to be refreshed







**PURDUE**  
UNIVERSITY

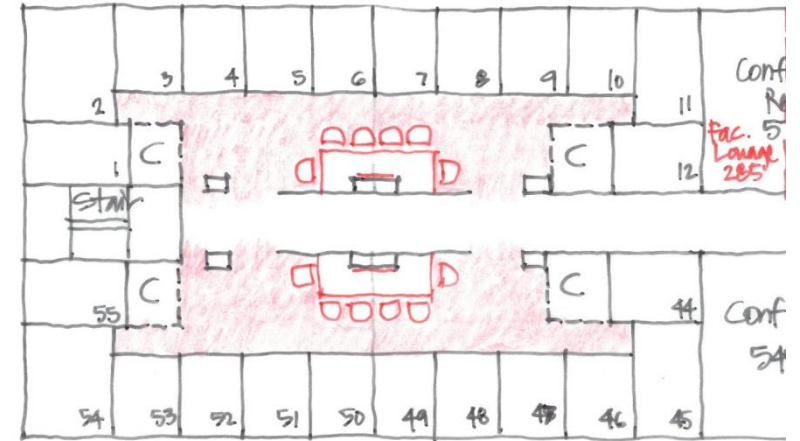
Heavilon Hall  
(HEAV)

**THINK BROADLY.**  
**LEAD BOLDLY.**

SCHMIDT  
  
ASSOCIATES

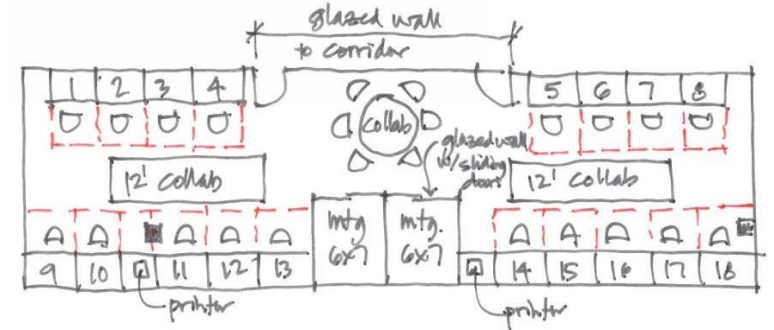
# Recommendations

- Reorganize faculty and staff offices to enhance collaboration and increase space utilization efficiency
- Relocate Writing Lab closer to the main entrance
- Provide Liberal Arts branding at entry
- Relocate Department Offices to first floor to enhance department visibility
- Increased space efficiency will create room for outlier spaces to be pulled back to the Liberal Arts cluster



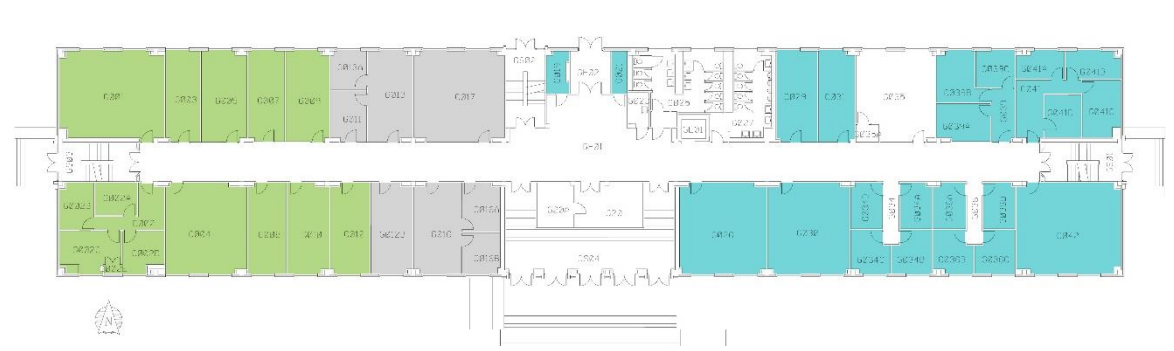
# Recommendations

- Combine Graduate Assistants on 4<sup>th</sup> floor
  - Provide more open work stations to encourage collaboration
  - Pool Service Add-ons to enhance shared collaboration space
  - Encourage “hoteling” stations to increase space flexibility
- Utilize glazing walls similar to Grissom Hall to draw natural light to the center hallway
- Create communicating stair at center of building to utilize circulation to foster interaction

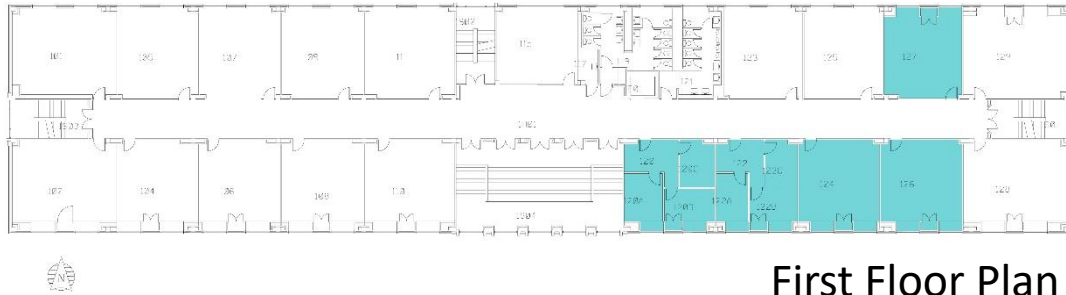




Basement Floor Plan



Ground Floor Plan



First Floor Plan



Second Floor Plan



Third Floor Plan

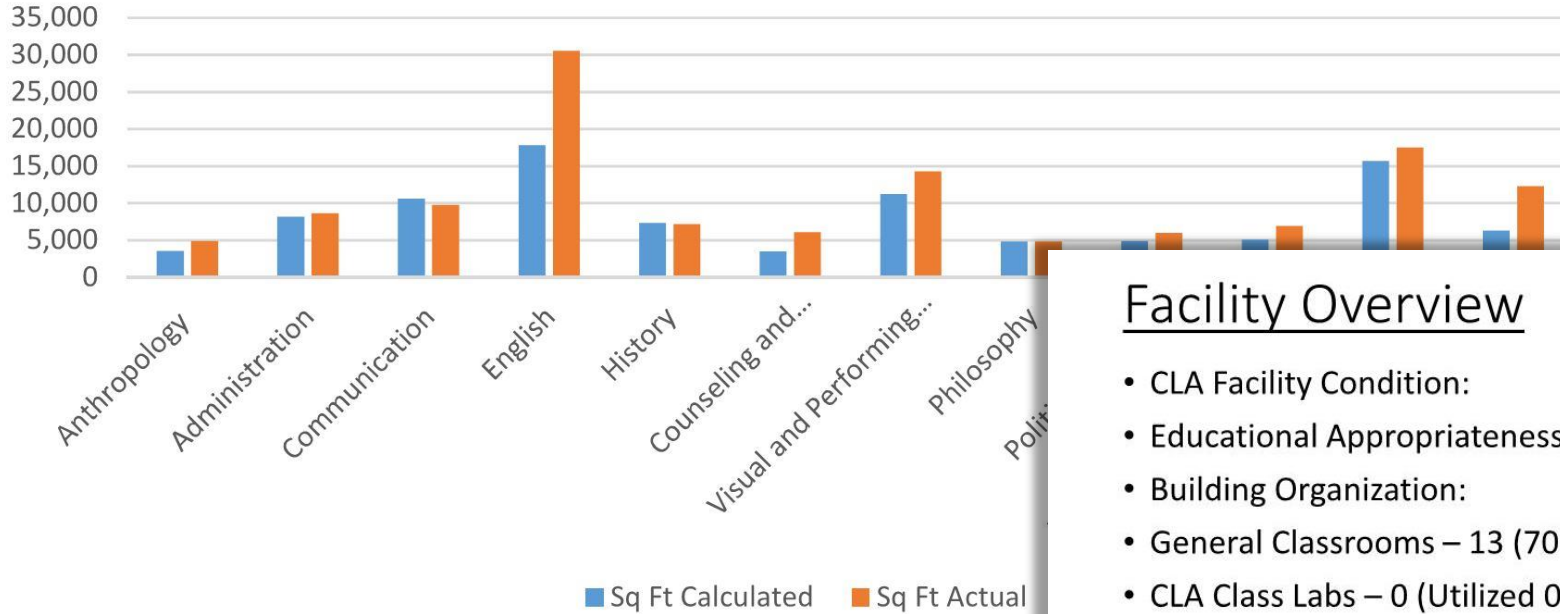


Fourth Floor Plan

Department Legend

- Anthropology
- Vis&Perf Art
- Communicatn
- Political Science
- History
- Psychology
- Interdis Study
- English
- Liberal Arts
- Philosophy
- Language & Culture
- Sociology
- LA Counsel

## Calculated vs Actual Sq Ft- Office Guidelines



## Facility Overview

- CLA Facility Condition: **Poor**
- Educational Appropriateness: **Fair**
- Building Organization: **Fair**
- General Classrooms – 13 (70% Utilized)
- CLA Class Labs – 0 (Utilized 0 Hrs/Week Avg.)
- Departmental Home for English



97,516	GSF
57,844	ASF
40,164	CLA Used
69.4%	CLA Percent Used

**PURDUE**  
UNIVERSITY

Heavilon Hall  
(HEAV)

**THINK BROADLY.  
LEAD BOLDLY.** SCHMIDT  
ASSOCIATES

**PURDUE**  
UNIVERSITY

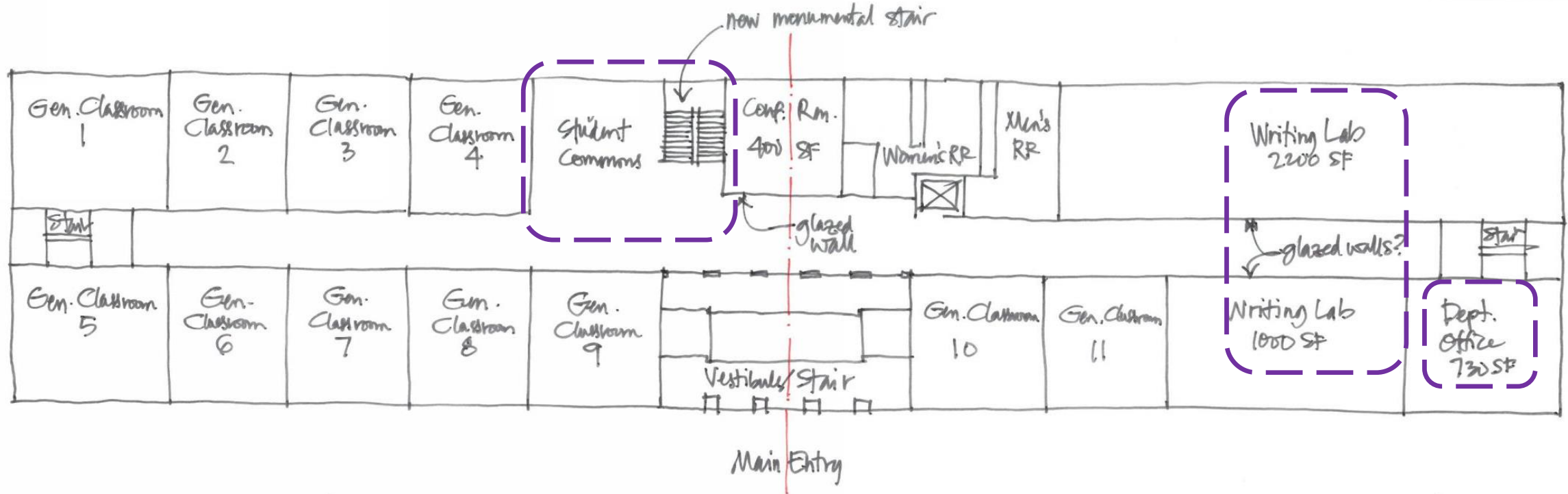
Heavilon Hall  
(HEAV)

**THINK BROADLY.  
LEAD BOLDLY.** SCHMIDT  
ASSOCIATES

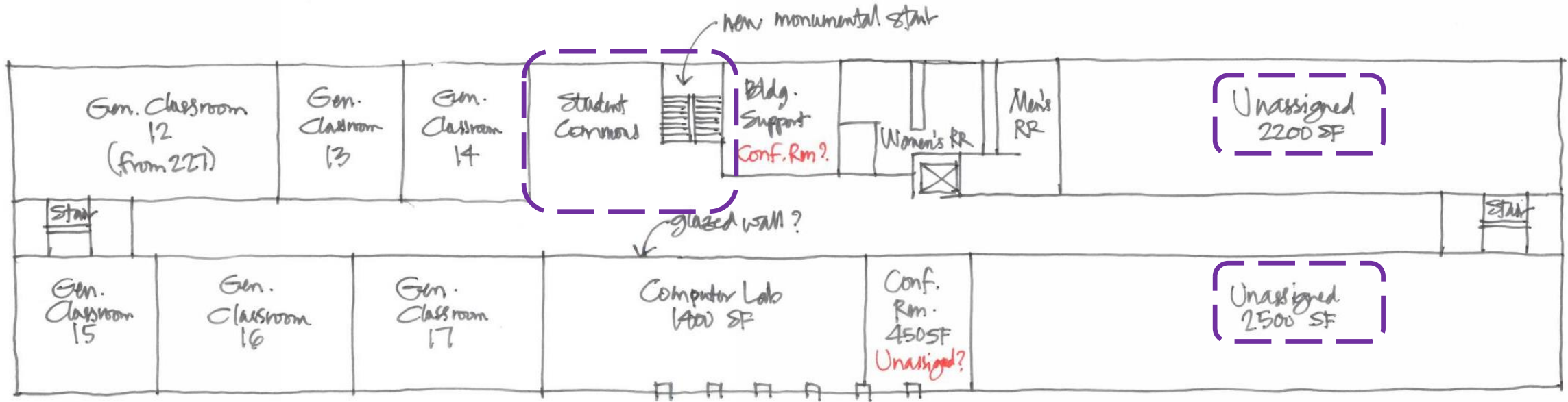
# Heavilon Hall Planning Assumptions

English	Count (FTE)	Total Sq ft	Planning Assumptions	Min Planning Standard	Total Sq ft
Dean		0			
Associate/Assistant Dean/Department Head or Director (over 20 staff)	1	210	1	150	150
Department Head or Director (small department)		0			
Tenured Faculty	54.37	8699.2	55	100	5500
		8909.2			5650
Visiting Scholars		623.644			
Non-Tenure track Faculty	5.67	850.5	6	100	600
Limited Term Lecturers/Adjuncts	4.09	531.7	4	100	400
Admin- Management		0			
Admin-Staff and Operations Assist	3	450	3	80	240
Clerical	7.25	870	7	60	420
Post-Doctoral Assistants		0			
Graduate Research and Graduate Admin Assist		0			
Graduate Teaching Assistant	60 *	4200	60	70	4200
Technical Staff		0			
Secondary Office		0			
Non-Employees		0			
		7525.844			5860
	135.38	16,435			11,510

\* Adjusted from 82 to 60 based on goal of 110 Graduate Assistants



First Floor Plan

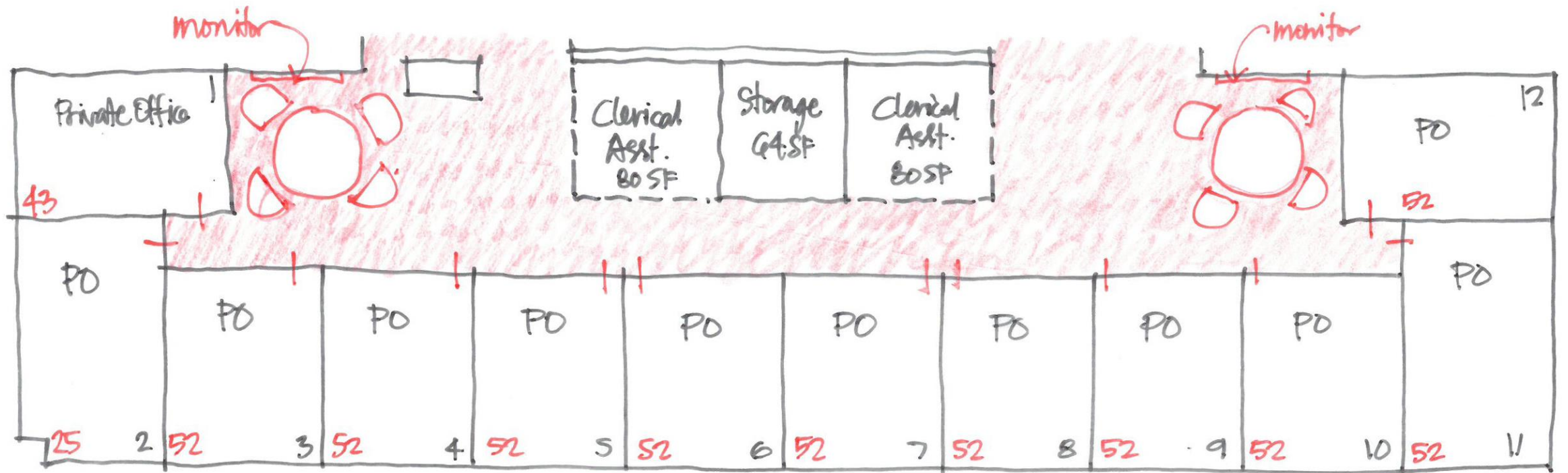


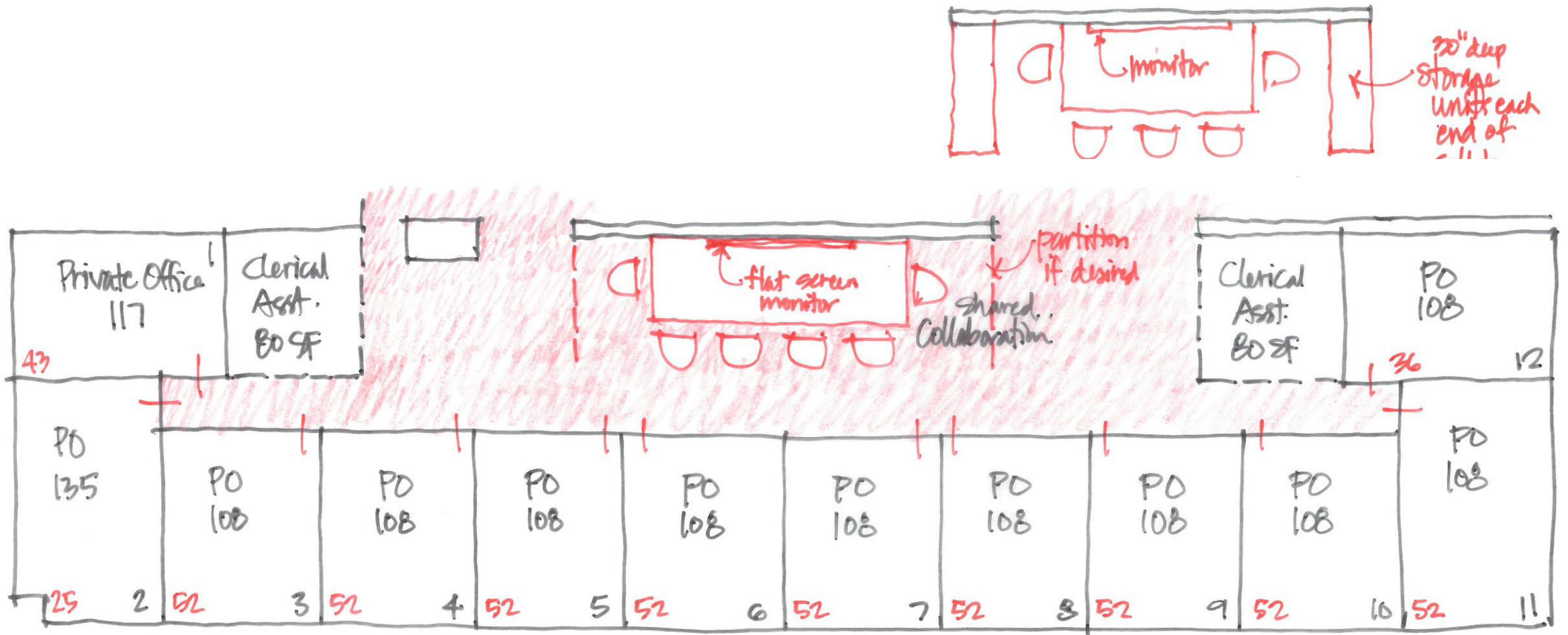
Second Floor Plan

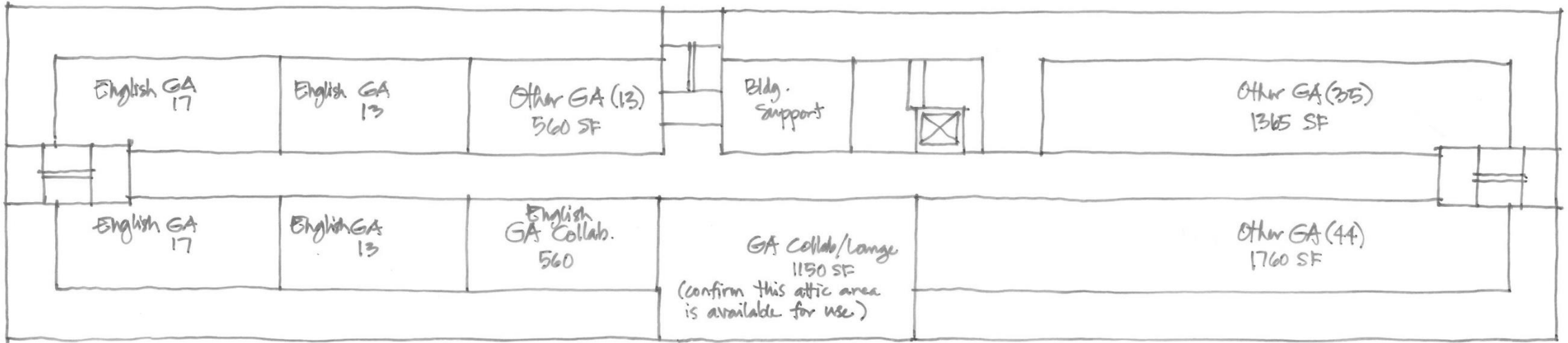




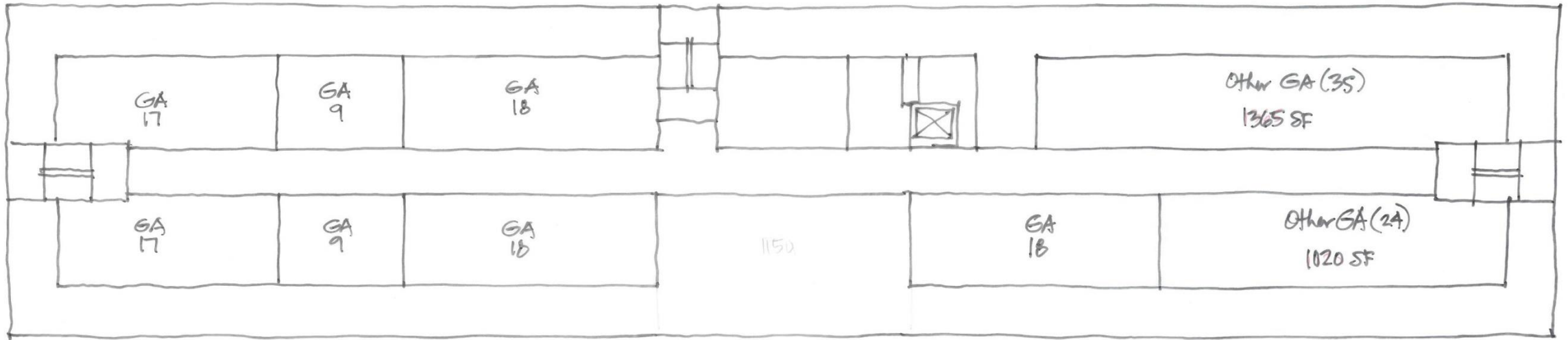
Third Floor/Private Offices



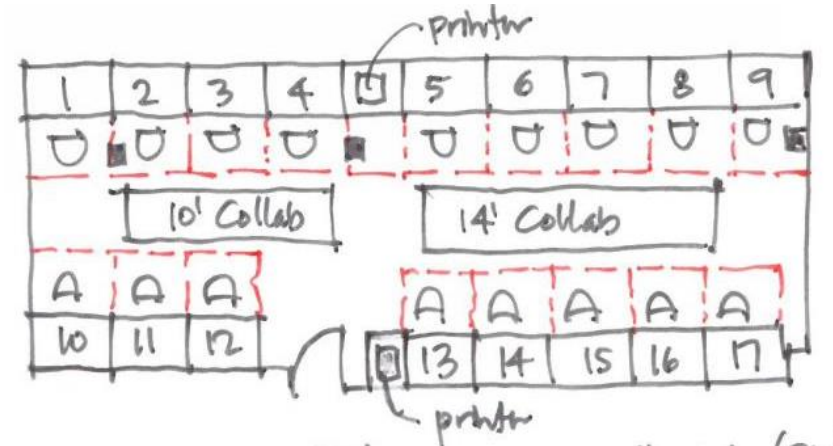
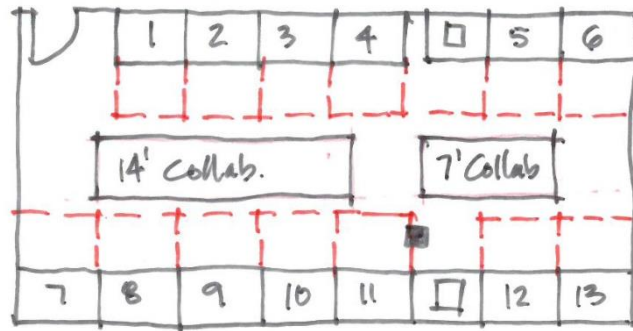
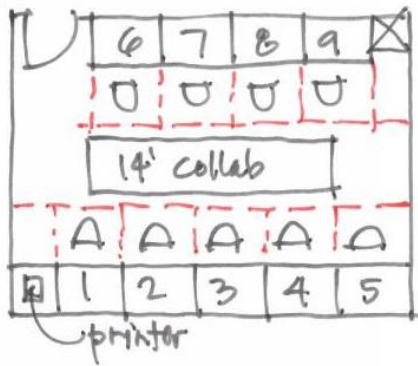




4th Floor/ GA Count = 600  
SF = 4100



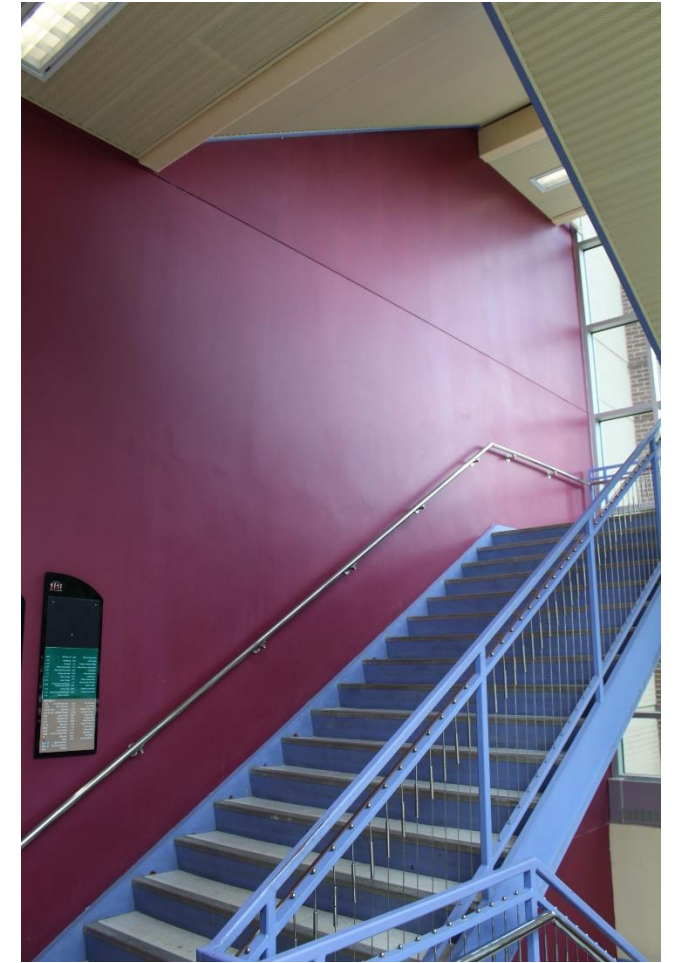
4th Floor / GA Count = 106  
 SF = 4200





# Recommendations

- Art integration
  - Stairwell
  - Lobby
- Better utilization of exterior courtyard through furniture and shade structure - opportunities for programming





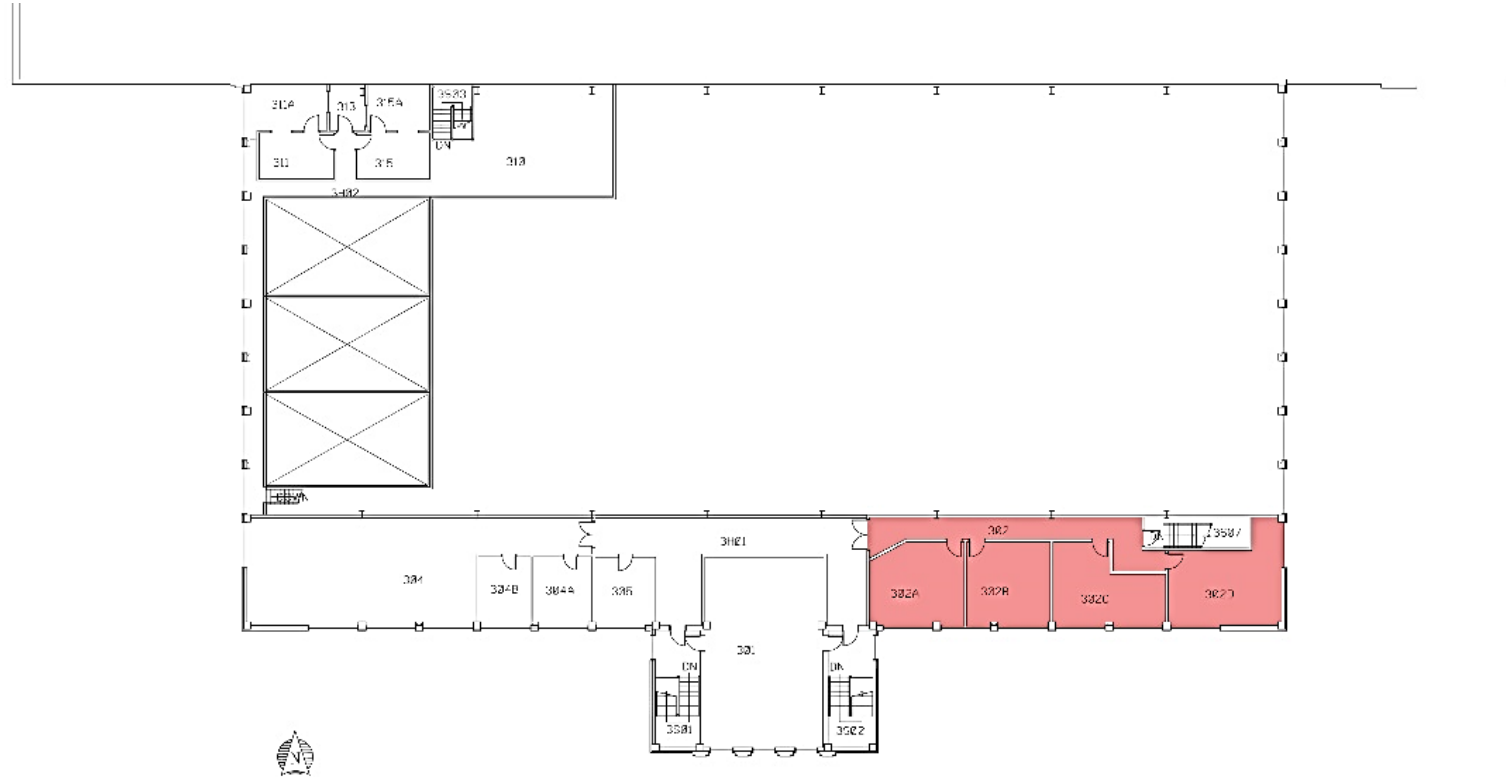
# Recommendations for non-CLA Specific Buildings

- Lambert Fieldhouse
- Forest Products
- Lilly Hall
- Perrin Building
- Physics Building
- Peirce Hall
- Recitation Building
- Stewart Center
- Stone Hall
- Young Hall



# Lambert Fieldhouse & Gym Recommendations

- Relocate Studios to Pao Hall or Forest Products



# Forest Products Recommendations

- Relocate Visual & Performing Arts to Pao Hall
- Relocate Lambert Studios to Forest Products
- Should receive some degree of renovation regardless of which Liberal Arts Department occupies space



# Lilly Hall Recommendations

- Look to relocate to Stanley Coulter Hall, or most likely Heavilon Hall
- If it remains in Lilly, incorporate Liberal Arts Branding to activate space



# Perrin Building Recommendations

- Connect to Liberal Arts program through Branding
- Host events that pull students from campus into the downtown area
- Tie in to Purdue Arboretum Explorer?



# Physics Building Recommendations

- Can remain as storage location
- Get as many items as possible out of storage and on display in the Liberal Arts buildings



Physics Building  
(PHYS)

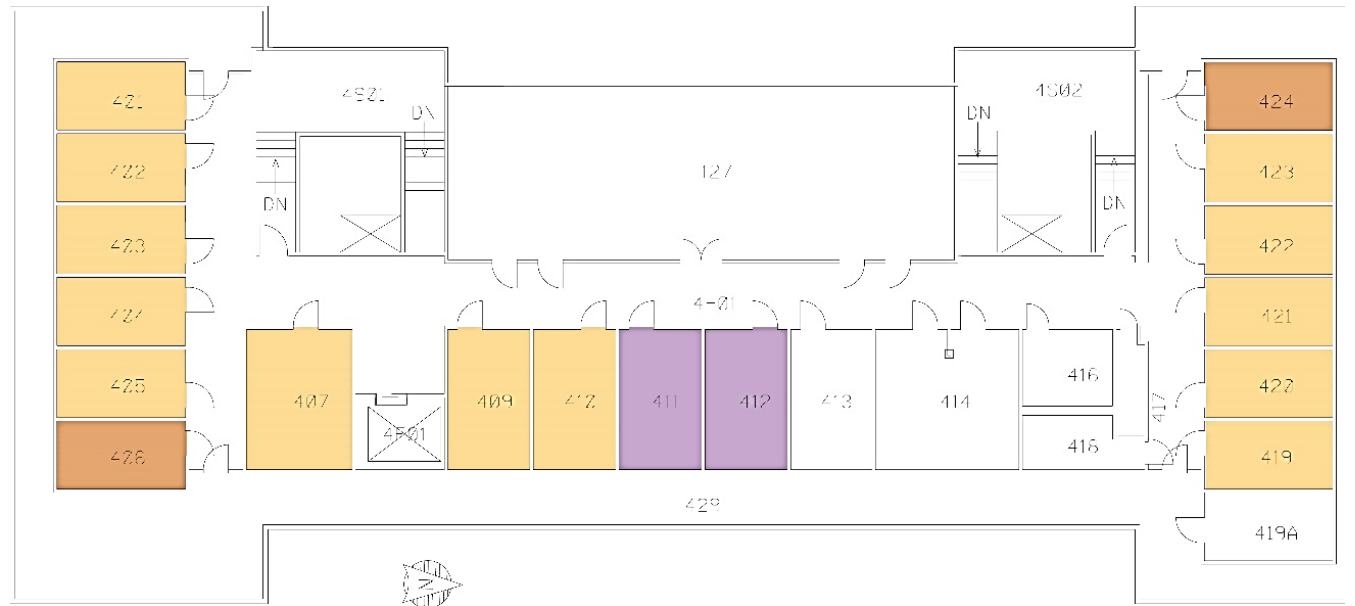
# Peirce Hall Recommendations

- Relocate Philosophy to Beering Hall
- Relocate Languages and Cultures to Stanley Coulter Hall



# Recitation Building Recommendations

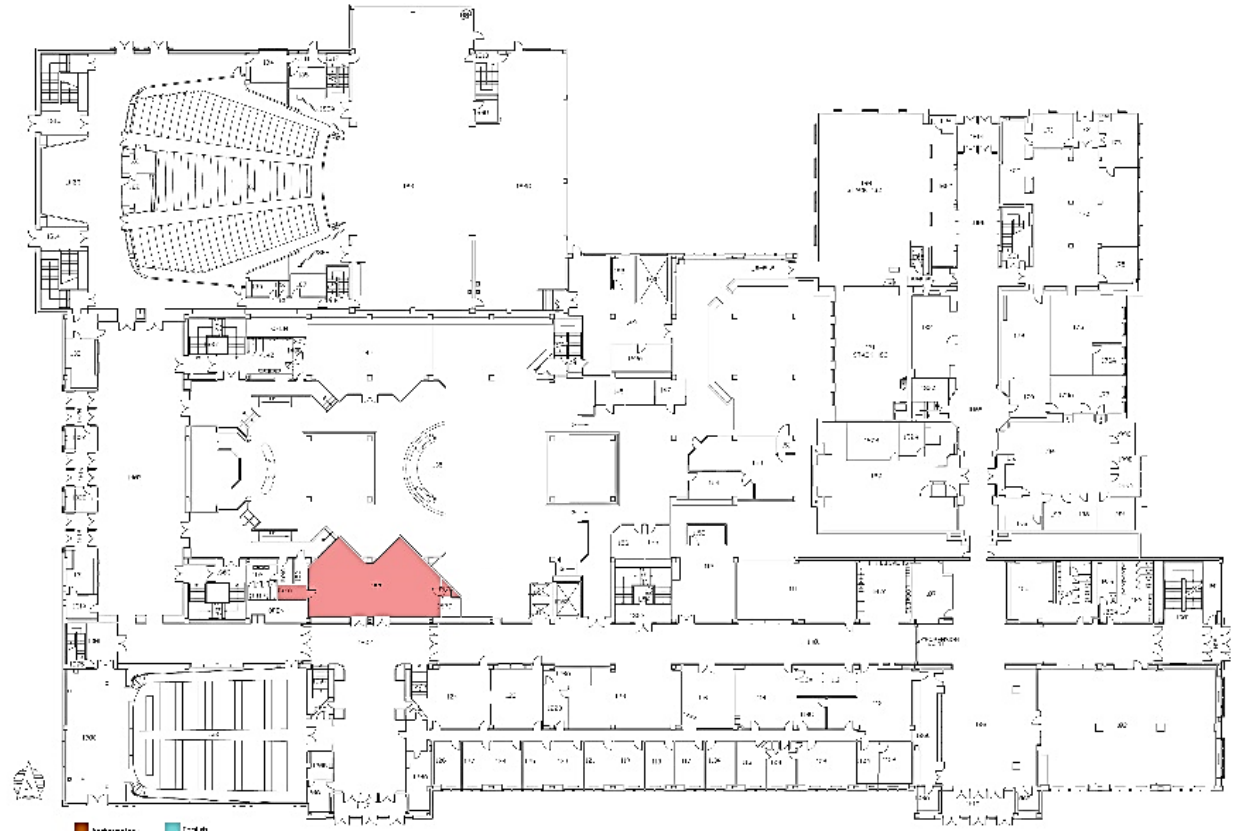
- 4<sup>th</sup> Floor – Gut and renovate, or
- Relocate Graduate Assistants to renovated 4<sup>th</sup> floor of Heavilon Hall
  - Consolidation of Graduate Assistants allows for greater flexibility as numbers in each program fluctuate





# Stewart Center Recommendations

- Play up the Art Gallery
- Increase the Liberal Arts Branding presence



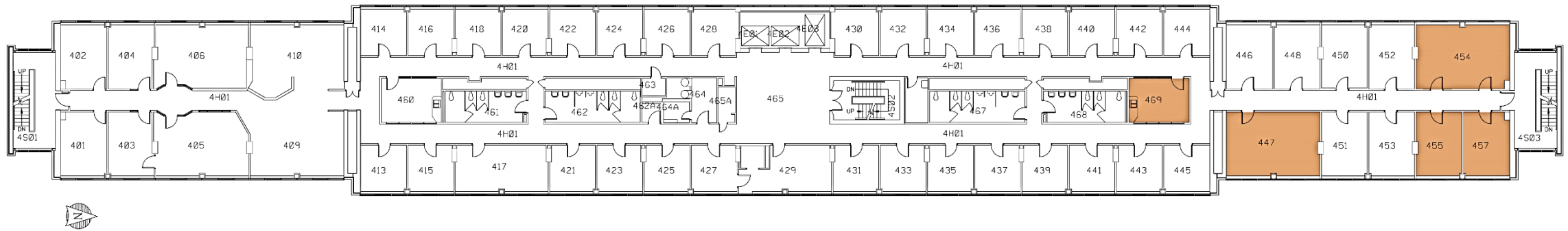
# Stone Hall Recommendations

- Establish branding in first floor lobby
  - Co-branding with Health & Human Services
- Reconfigure offices to allow for Commons Space and support space
- Look at renovation similar to Heavilon Hall



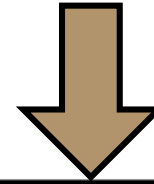
# Young Hall Recommendations

- Look at potential to move offices to Beering Hall



# Purdue College of Liberal Arts

Master Plan  
6/24/2016



	2016																																		
	March				April				May				June				July				August				September				October						
	7	14	21	28	4	11	18	25	2	9	16	23	30	6	13	20	27	4	11	18	25	1	8	15	22	29	5	12	19	26	3	10	17	24	31
Project Kick-Off Meeting	█																																		
Purdue Leadership Meeting - Biweekly - 5/3/16 (10:30am)	█		█		█		█		█		█		█		█		█		█		█		█		█		█		█		█		█		
Space Utilization - Information Gathering		█	█	█	█	█	█	█	█	█	█	█	█																						
Space Appropriateness/Assessment																																			
Gather Input																																			
Survey Faculty/Staff						█	█	█	█	█	█	█	█																						
CLA Leadership Group Meeting - 4/19/16						█																													
CLA Student Meeting - 4/31/16							█																												
Spring Semester Ends/Fall Semester Begins									█	█	█	█	█	█	█	█	█	█	█	█	█	█	█	█	█	█	█	█	█	█	█	█	█	█	
Options Development																																			
CLA Advisory Group Input/Feedback Presentation - 8/30/16																																			
Option Select/Refine																																			
CLA Advisory Group Input/Feedback Presentation - 10/4/16																																			
Final Study																																			



**PURDUE**  
UNIVERSITY

**THINK BROADLY.  
LEAD BOLDLY.**

SCHMIDT  
  
ASSOCIATES

# What We Have Heard

## Student Survey

19 Surveys Returned

9 Juniors

No Grad Students

Highest Participation = Communication and Visual and Performing Arts

Most Utilized Building for Group = Beering and PAO

Approx. 79% rank their Impression of overall CLA facilities as Neutral or Poor

Approx. 90% rank their impression of the building they use most as Neutral, Poor, or Low

Approx. 2/3 spend time in CLA building while not in class- Most for Computer Labs, Studios, Meetings, and Software Access

Brand Impression = Very favorable towards “Think Broadly- Lead Boldly”

Concern that- Students not in the program don’t know about it

The facilities don’t tell the story of the Brand



# What We Have Heard

## Student Survey

What is the most needed change?

17/18 Requested More Spaces for Studying/working/Common space

5/18 Requested space for Food

3/18 Requested better restroom facilities

Better windows, upgraded facilities and nicer lounge/collaboration furniture was also requested multiple times

What should we think about for long term planning?

Almost all students repeated the themes above

In addition- multiple requests were made for updated buildings (aesthetically and functionally) as well as updated “future-proof” technology

# What We Have Heard

## Staff Survey

235 Surveys Returned

40% Professors

21.8% Grad Students

10.7% Admin

5.6 % Adjuncts

Highest Participation = Visual and Performing Arts, Communication, English, Language and Culture

Most Utilized Building(s) for Group = Beering, Heavilon Hall, Stone, PAO and Stanley

Brand Impression- Generally Neutral but all over the map from;

“ I didn’t realize we had one,” to “Corny and juvenile,” to “ Awesome,” to “ I don’t like the concept of brand (in education)”

Approx. 63% rank their impression of CLA buildings as a whole as Neutral, Poor, or Low

Approx. 65% rank their impression of the building they use most as Neutral, Poor, or Low

Approx. 3/4 spend more than 20 hours a week in their primary CLA home facility

Most Common Requests:

More Cleaning and Building Modernization (Inc., finishes, HVAC, technology, restrooms, etc.- Beering and Heavilon called out specifically)

More Collaborative space, meeting room space, grad student space

Access to food and Light! (windows)