



Regular Features

- Communicator Home
- Alumni News
- Alumni Notes
- Department Head
- Department News
- Back Issues
- CGSA News

Inside

- Ethiopia Trip
- A+ Projects
- It's A Breeze

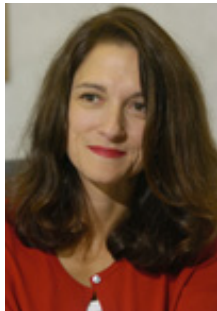
Communicator Staff

- Emily Hambidge
- Shane Rubeck
- Micah L. Howard

Adviser:
Jane Gibson Natt

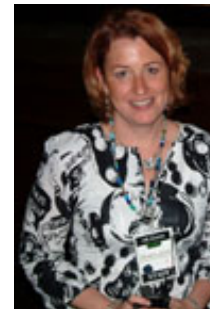
Funded Research

Department faculty are using nearly \$1 million in internal and external funding to further cutting-edge research [More>>>](#)



Women at Work

[Besty Wiersma](#) and [Theresa Kraft](#) earn industry accolades at the companies they own and operate



first jobs

By day Craig Terrill was enduring the grueling trials of rookie camp in the NFL. At night, he was putting his Purdue journalistic training to work writing columns for the *Spokane Spokesman-Review*.

Recent department graduates talk about how their Purdue education has helped them in a variety of first jobs.

[More>>>](#)

The Communicator is the official alumni publication of the [Department of Communication](#) at [Purdue University](#). It is published twice yearly by students in COM252 under the supervision of adviser [Jane Gibson Natt](#).